

Linn County and the City of Cedar Rapids, Iowa
 Iowa North Zone (1401)
 Horiz. Datum: NAD83(1996)
 Vert. Datum: NAVD 1988
 US Survey Feet
 2005

Point Name: **Linn 2**

Designation: Station 2, Set by the Surdex Corp. for Linn County in 2000

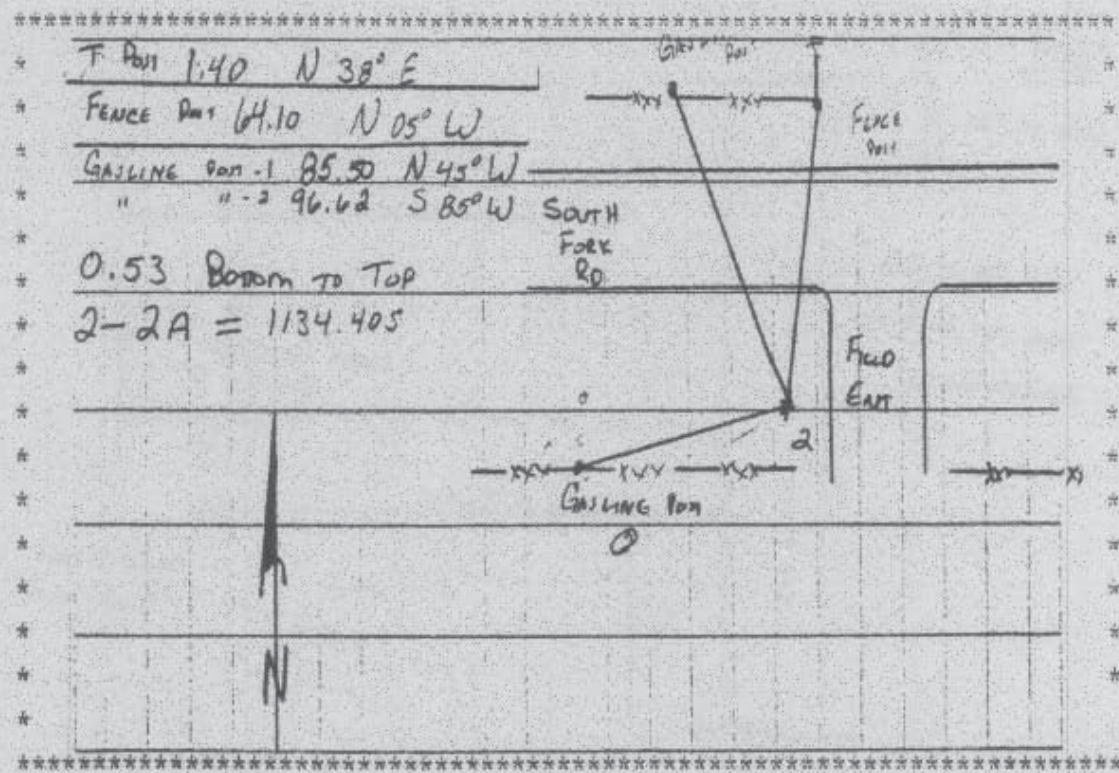
Northing: **3468386.31**sft Easting: **5501102.49**sft

Orthometric Height: **938.99**sft Ellipsoid Height: **832.70**sft **Geoid03**

Latitude: **41°59'40.48297"N** Longitude: **91°22'00.33001"W**

Mapping Angle: **1°26'45"** Combination Scale Factor: **0.99997413**

Monument Type: Aluminum Cap on 6-foot Rebar set in a 6" dia. PVC pipe with an aluminum access cover.



Prepared by DCI and GBC for Linn Co. and the City of Cedar Rapids, Iowa (Revised 08-05-05).