

**Linn County and the City of Cedar Rapids, Iowa**  
Iowa North Zone (1401)  
Horiz. Datum: NAD83(1996)  
Vert. Datum: NAVD 1988  
US Survey Feet  
**2005**

Point Name: **Linn 20**

**Designation:** LINN COUNTY GPS CONTROL PT. 2005-020, set by DCI for Linn Co. in 2005

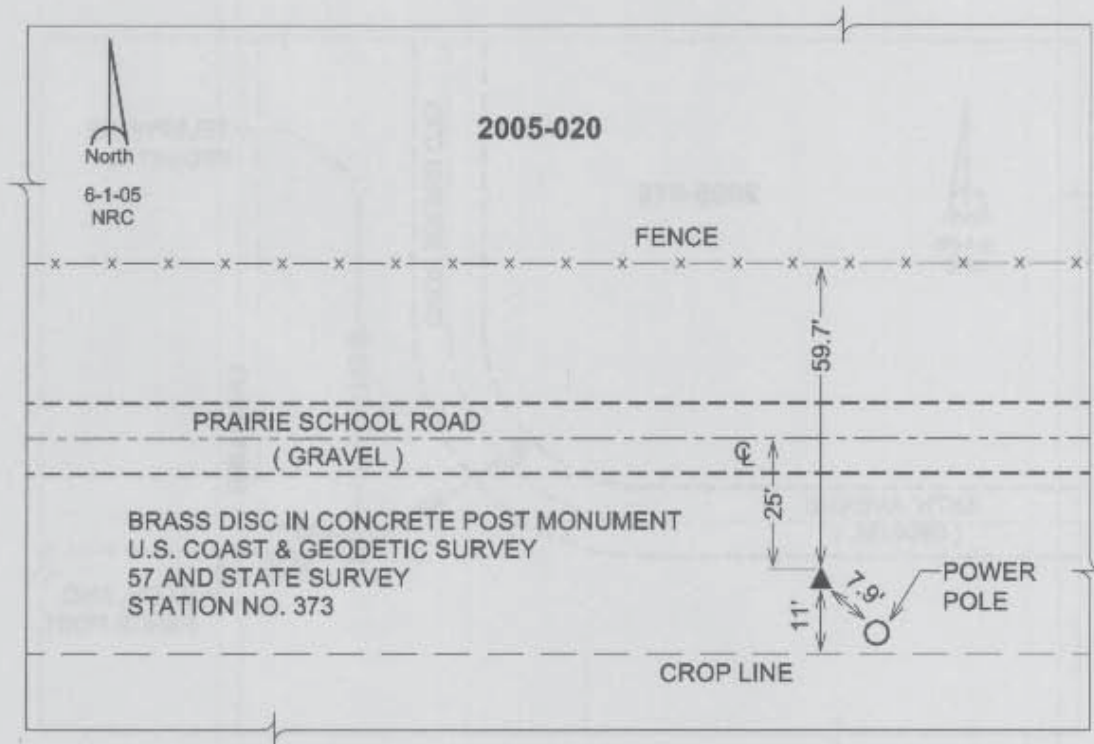
Northing: **3433963.71sft** Easting: **5437925.13sft**

Orthometric Height: **827.34sft** Ellipsoid Height: **721.21sft** **Geoid03**

Latitude: **41°54'15.40598"N** Longitude: **91°36'06.99750"W**

Mapping Angle: **1°17'11"** Combination Scale Factor: **0.99999902**

**Monument Type:** United States Coast & Geodetic Survey and State Survey disk, stamped "Station No. 373" and set in the top of a concrete monument. Monument appears to have been reset in recent history.



*Prepared by DCI and GBC for Linn Co. and the City of Cedar Rapids, Iowa (Revised 08-05-05).*