

**Linn County and the City of Cedar Rapids, Iowa**  
Iowa North Zone (1401)  
Horiz. Datum: NAD83(1996)  
Vert. Datum: NAVD 1988  
US Survey Feet  
2005

Point Name: **Linn 21**

**Designation:** LINN COUNTY GPS CONTROL PT. 2005-021, set by DCI for Linn Co. in 2005

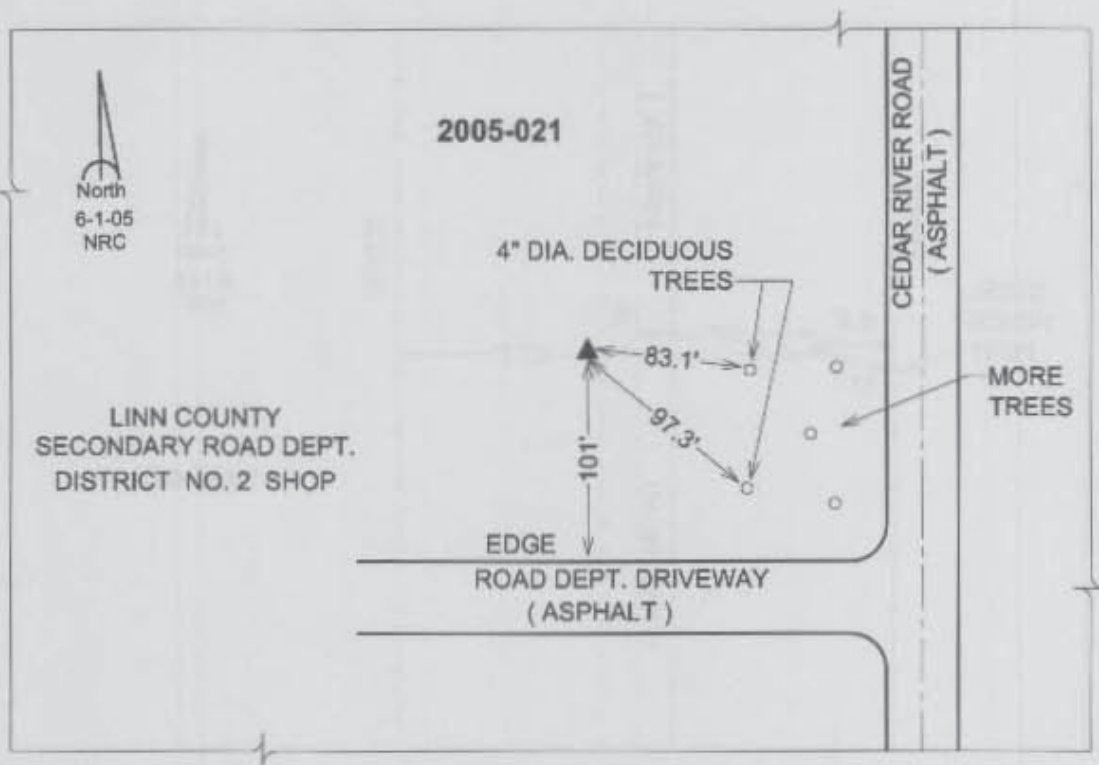
Northing: 3439373.85sft Easting: 5470325.83sft

Orthometric Height: 764.02sft Ellipsoid Height: 657.66sft Geoid03

Latitude: 41°55'01.42513"N Longitude: 91°28'56.95059"W

Mapping Angle: 1°22'02" Combination Scale Factor: 0.99999914

**Monument Type:** Berntsen Top Security Rod Monument with a 2-1/2" dia, domed survey cap and permanent magnet encased in a 5" dia. PVC pipe with a NGS style aluminum access cover.



*Prepared by DCI and GBC for Linn Co. and the City of Cedar Rapids, Iowa (Revised 08-05-05).*