

Linn County and the City of Cedar Rapids, Iowa
Iowa North Zone (1401)
Horiz. Datum: NAD83(1996)
Vert. Datum: NAVD 1988
US Survey Feet
2005

Point Name: **Linn 22**

Designation: LINN COUNTY GPS CONTROL PT. 2005-022, set by DCI for Linn Co. in 2005

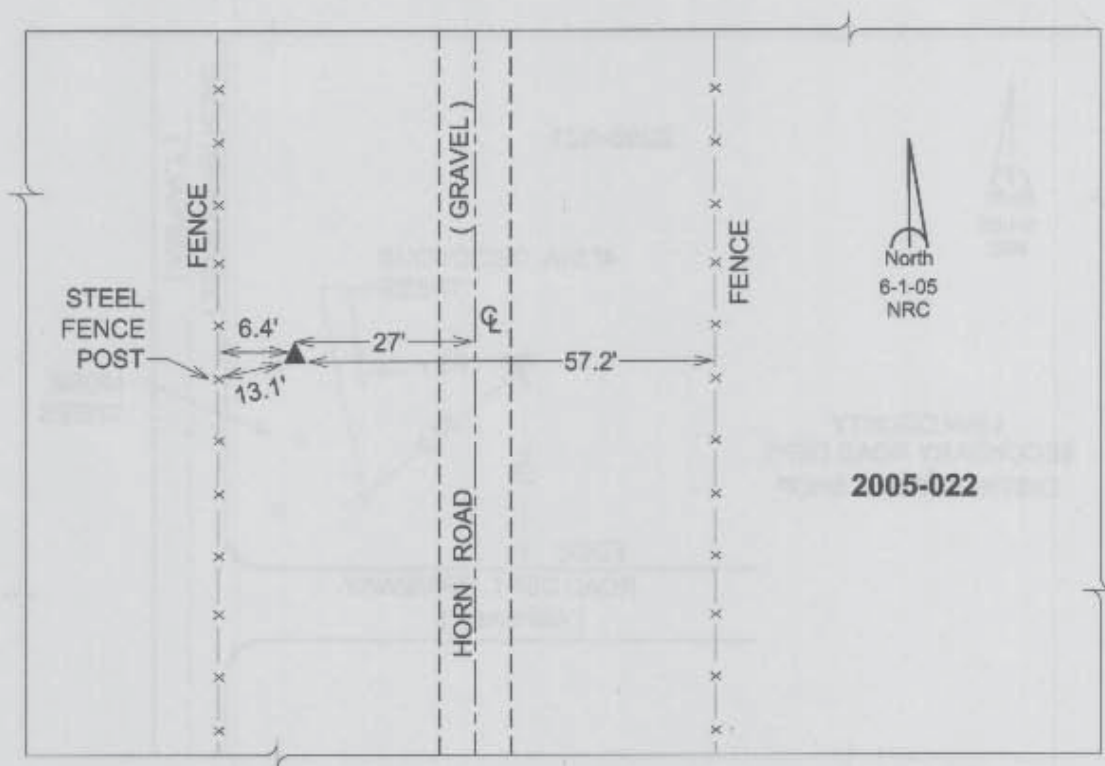
Northing: **3466824.10**sft Easting: **5469806.66**sft

Orthometric Height: **824.68**sft Ellipsoid Height: **718.56**sft **Geoid03**

Latitude: **41°59'32.64483"N** Longitude: **91°28'55.14932"W**

Mapping Angle: **1°22'04"** Combination Scale Factor: **0.99998002**

Monument Type: Berntsen Top Security Rod Monument with a 2-1/2" dia. domed survey cap and permanent magnet encased in a 5"dia. PVC pipe with a NGS style aluminum access cover.



Prepared by DCI and GBC for Linn Co. and the City of Cedar Rapids, Iowa (Revised 08-05-05).