

Linn County and the City of Cedar Rapids, Iowa  
Iowa North Zone (1401)  
Horiz. Datum: NAD83(1996)  
Vert. Datum: NAVD 1988  
US Survey Feet  
2005

Point Name: **Linn 23**

**Designation:** LINN COUNTY GPS CONTROL PT. 2005-023, set by DCI for Linn Co. in 2005

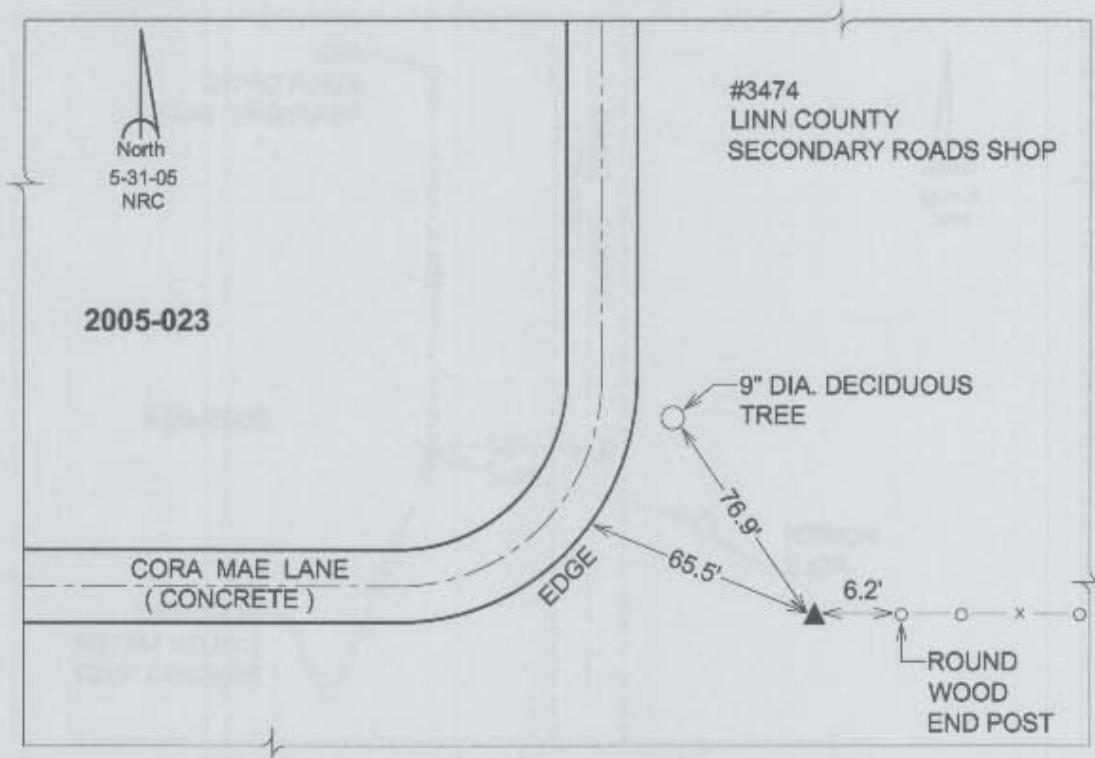
Northing: **3501836.88sft** Easting: **5408749.13sft**

Orthometric Height: **816.48sft** Ellipsoid Height: **712.13sft** **Geoid03**

Latitude: **42°05'32.04661"N** Longitude: **91°42'13.66040"W**

Mapping Angle: **1°13'03"** Combination Scale Factor: **0.99996148**

**Monument Type:** Berntsen Top Security Rod Monument with a 2-1/2" dia. domed survey cap and permanent magnet encased in a 5" dia. PVC pipe with a NGS style aluminum access cover.



Prepared by DCI and GBC for Linn Co. and the City of Cedar Rapids, Iowa (Revised 08-05-05).