

Linn County and the City of Cedar Rapids, Iowa
Iowa North Zone (1401)
Horiz. Datum: NAD83(1996)
Vert. Datum: NAVD 1988
US Survey Feet
2005

Point Name: **Linn 24**

Designation: LINN COUNTY GPS CONTROL PT. 2005-024, set by DCI for Linn Co. in 2005

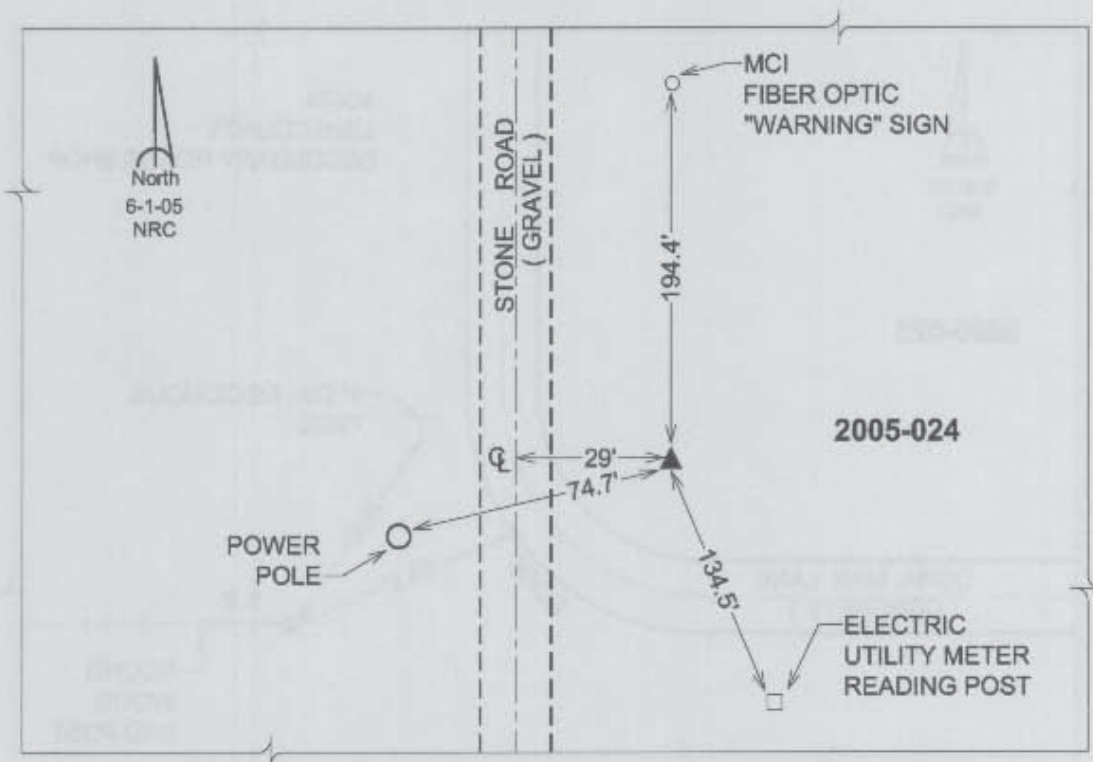
Northing: **3498523.20**sft Easting: **5469183.14**sft

Orthometric Height: **878.09**sft Ellipsoid Height: **772.39**sft **Geoid03**

Latitude: **42°04'45.85118"N** Longitude: **91°28'53.38210"W**

Mapping Angle: **1°22'05"** Combination Scale Factor: **0.99996086**

Monument Type: Berntsen Top Security Rod Monument with a 2-1/2" dia. domed survey cap and permanent magnet encased in a 5" dia. PVC pipe with a NGS style aluminum access cover.



Prepared by DCI and GBC for Linn Co. and the City of Cedar Rapids, Iowa (Revised 08-05-05).