

**Linn County and the City of Cedar Rapids, Iowa**  
Iowa North Zone (1401)  
Horiz. Datum: NAD83(1996)  
Vert. Datum: NAVD 1988  
US Survey Feet  
**2005**

Point Name: **Linn 27**

**Designation:** LINN COUNTY GPS CONTROL PT. 2005-027, set by DCI for Linn Co. in 2005

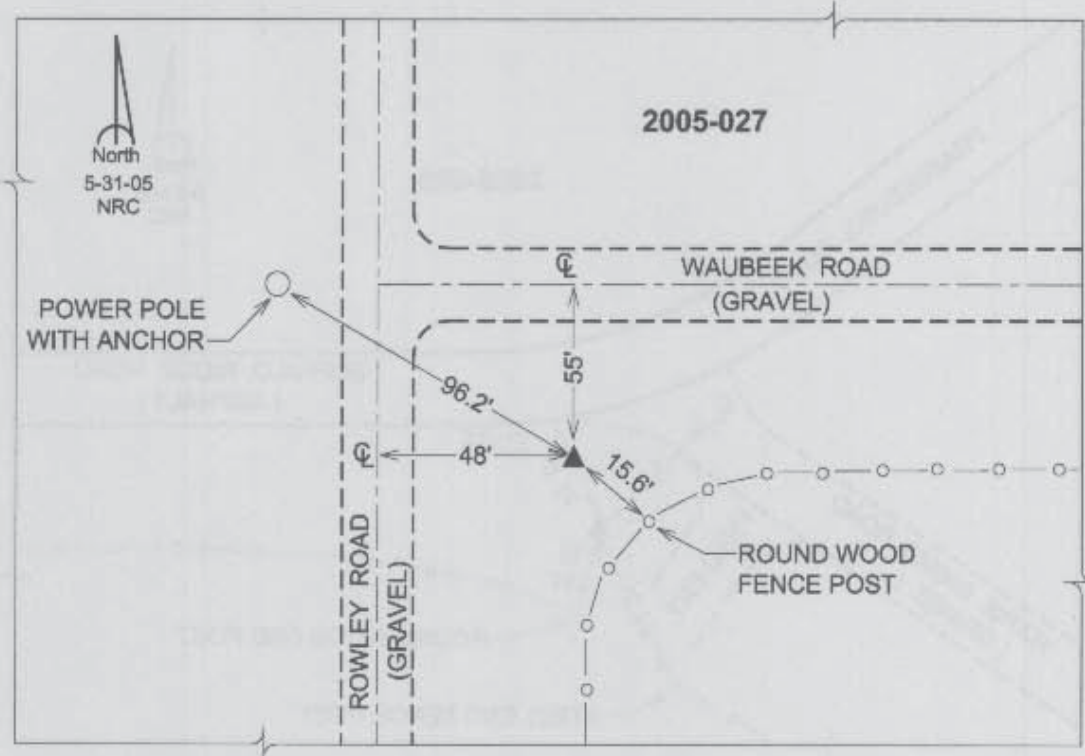
Northing: **3531254.52sft** Easting: **5453945.11sft**

Orthometric Height: **920.95sft** Ellipsoid Height: **816.29sft** **Geoid03**

Latitude: **42°10'12.65356"N** Longitude: **91°32'05.30437"W**

Mapping Angle: **1°19'55"** Combination Scale Factor: **0.99994387**

**Monument Type:** Berntsen Top Security Rod Monument with a 2-1/2" dia. domed survey cap and permanent magnet encased in a 5" dia. PVC pipe with a NGS style aluminum access cover.



*Prepared by DCI and GBC for Linn Co. and the City of Cedar Rapids, Iowa (Revised 08-05-05).*