

Linn County and the City of Cedar Rapids, Iowa
Iowa North Zone (1401)
Horiz. Datum: NAD83(1996)
Vert. Datum: NAVD 1988
US Survey Feet
2005

Point Name: **Linn 28**

Designation: LINN COUNTY GPS CONTROL PT. 2005-028, set by DCI for Linn Co. in 2005

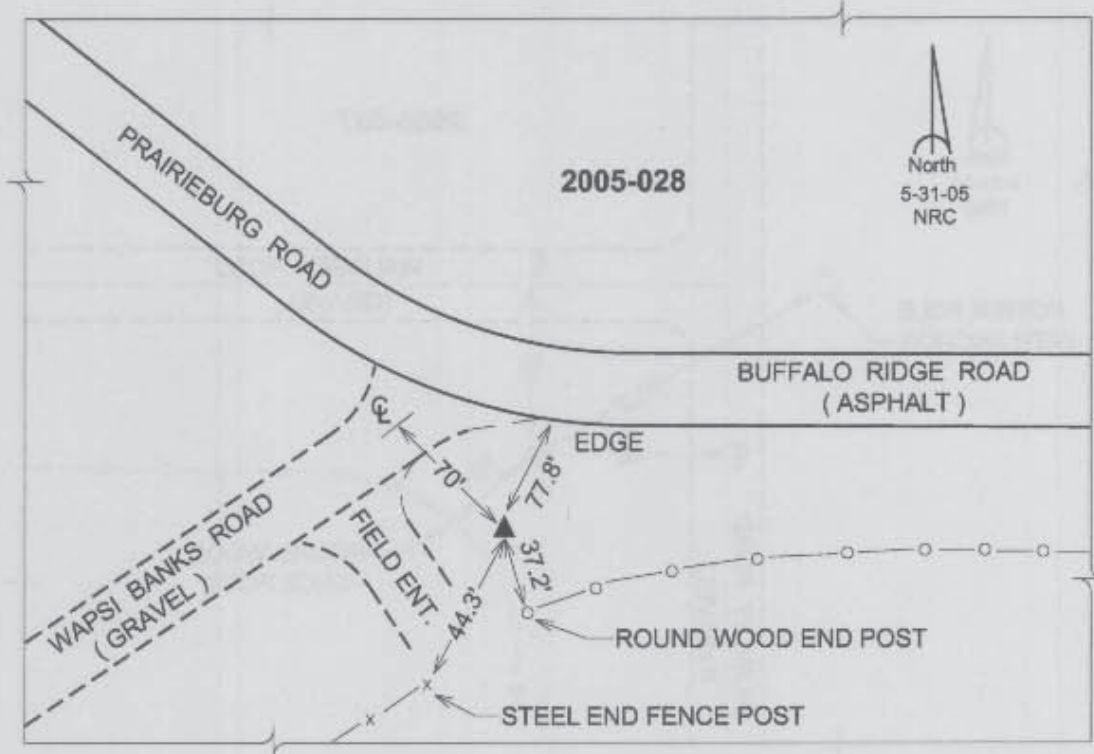
Northing: **3531726.11sft** Easting: **5487505.88sft**

Orthometric Height: **946.54sft** Ellipsoid Height: **841.29sft** **Geoid03**

Latitude: **42°10'09.36195"N** Longitude: **91°24'39.60688"W**

Mapping Angle: **1°24'57"** Combination Scale Factor: **0.99994282**

Monument Type: Berntsen Top Security Rod Monument with a 2-1/2" dia. domed survey cap and permanent magnet encased in a 5"dia. PVC pipe with a NGS style aluminum access cover.



Prepared by DCI and GBC for Linn Co. and the City of Cedar Rapids, Iowa (Revised 08-05-05).