

Linn County and the City of Cedar Rapids, Iowa
Iowa North Zone (1401)
Horiz. Datum: NAD83(1996)
Vert. Datum: NAVD 1988
US Survey Feet
2005

Point Name: Linn 29

Designation: LINN COUNTY GPS CONTROL PT. 2005-029, set by DCI for Linn Co. in 2005.

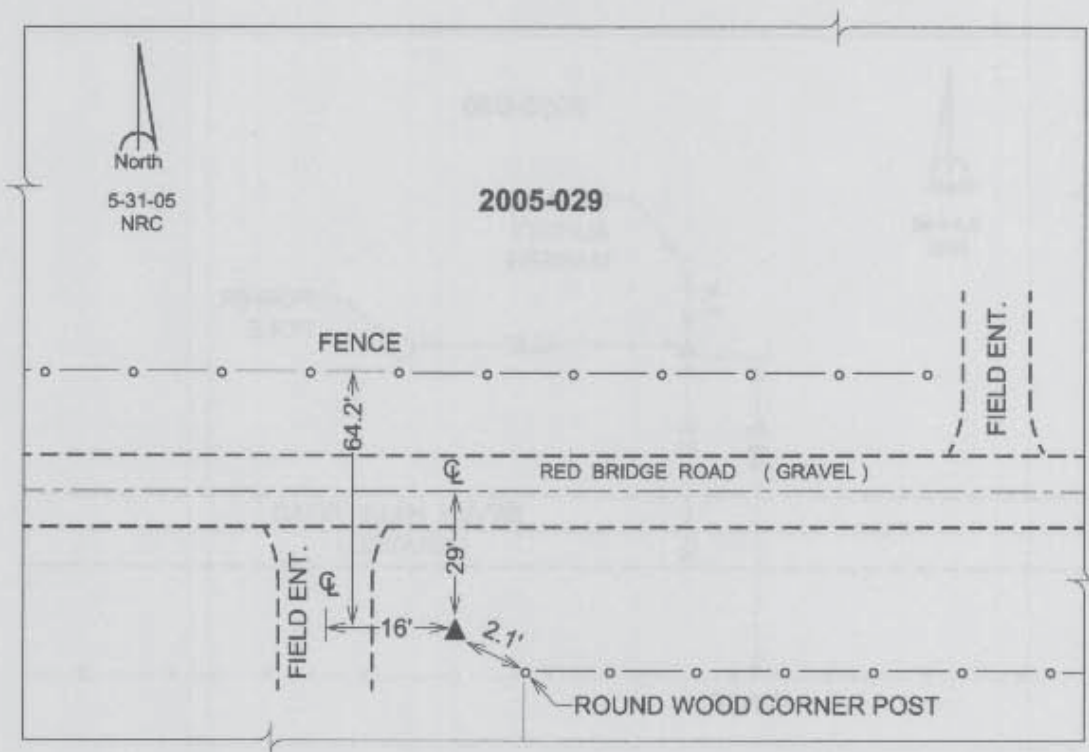
Northing: 3561765.16sft Easting: 5470147.52sft

Orthometric Height: 902.78sft Ellipsoid Height: 798.85sft Geoid03

Latitude: 42°15'10.19743"N Longitude: 91°28'20.48530"W

Mapping Angle: 1°22'27" Combination Scale Factor: 0.99993331

Monument Type: Berntsen Top Security Rod Monument with a 2-1/2" dia. domed survey cap and permanent magnet encased in a 5" dia. PVC pipe with a NGS style aluminum access cover.



Prepared by DCI and GBC for Linn Co. and the City of Cedar Rapids, Iowa (Revised 08-05-05).