

**Linn County and the City of Cedar Rapids, Iowa**  
 Iowa North Zone (1401)  
 Horiz. Datum: NAD83(1996)  
 Vert. Datum: NAVD 1988  
 US Survey Feet  
**2005**

Point Name: **Linn 3**

**Designation:** Station 3, Set by the Surdex Corp. for Linn County in 2000

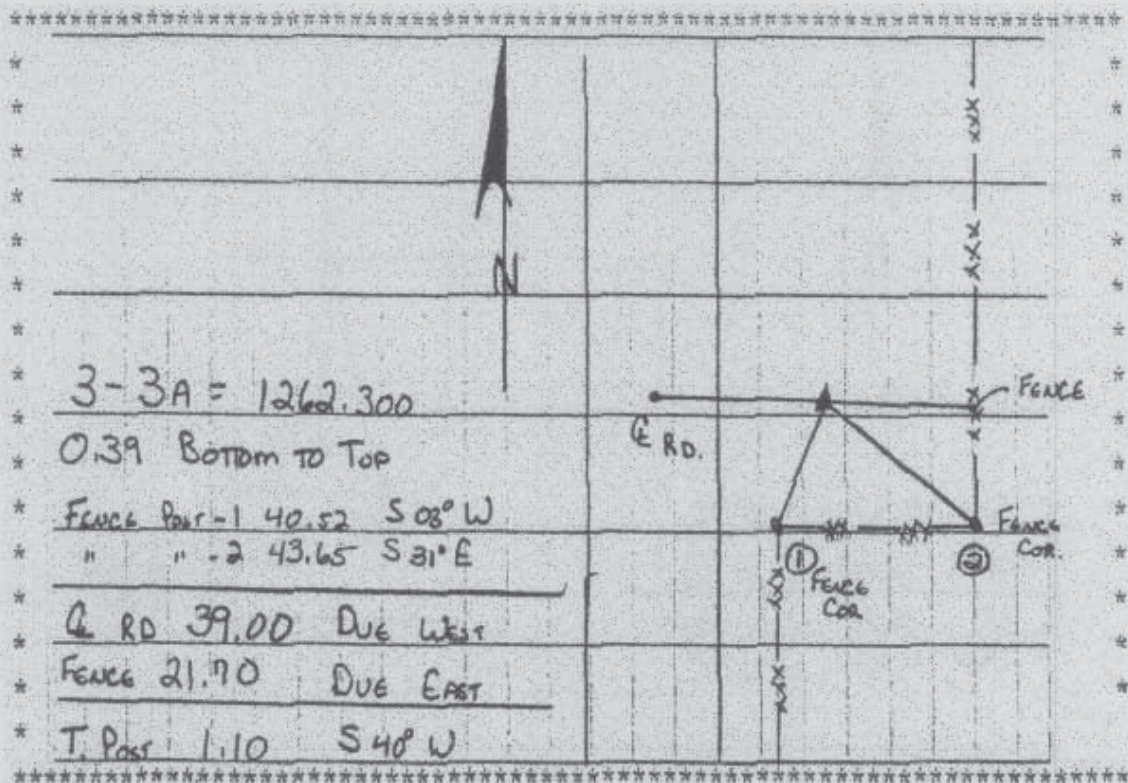
Northing: **3493383.23**sft Easting: **5479649.10**sft

Orthometric Height: **865.02**sft Ellipsoid Height: **759.10**sft **Geoid03**

Latitude: **42°03'52.59756"N** Longitude: **91°26'36.29608"W**

Mapping Angle: **1°23'38"** Combination Scale Factor: **0.99996415**

**Monument Type:** Aluminum Cap on 6-foot Rebar set in a 6" dia. PVC pipe with an aluminum access cover.



Prepared by DCI and GBC for Linn Co. and the City of Cedar Rapids, Iowa (Revised 08-05-05).