

Linn County and the City of Cedar Rapids, Iowa
 Iowa North Zone (1401)
 Horiz. Datum: NAD83(1996)
 Vert. Datum: NAVD 1988
 US Survey Feet
2005

Point Name: **Linn 3A**

Designation: Station 3A, Set by the Surdex Corp. for Linn County in 2000

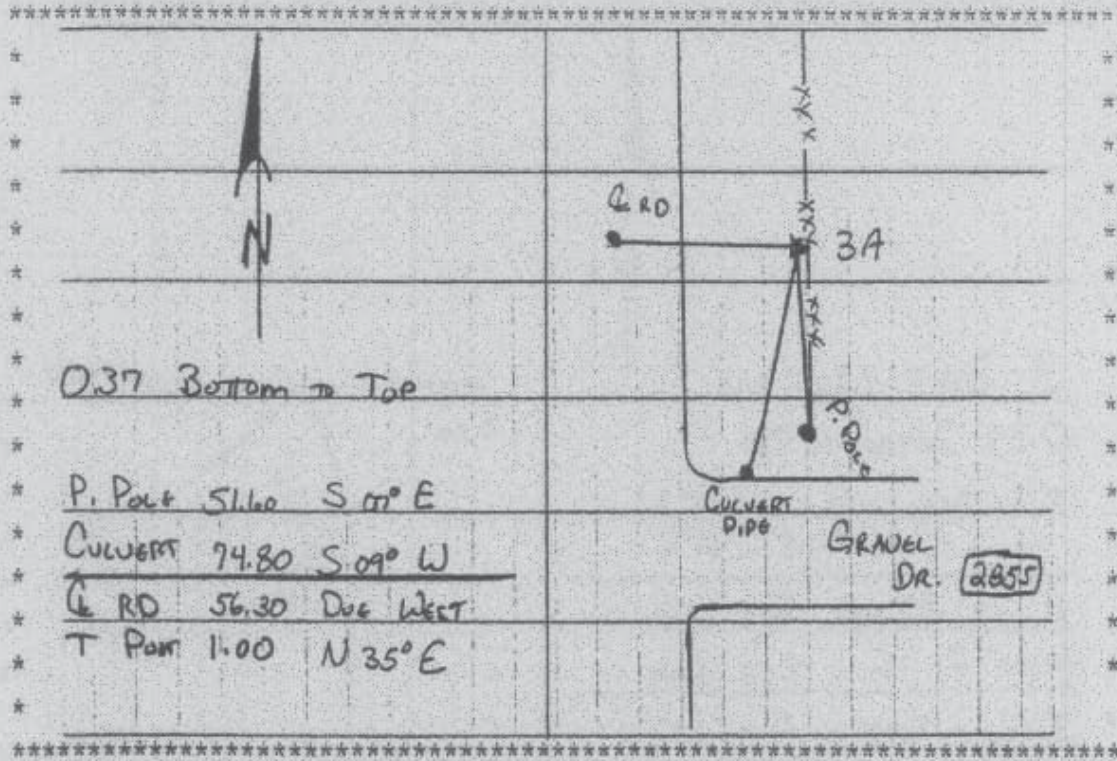
Northing: **3494645.32sft** Easting: **5479627.55sft**

Orthometric Height: **850.70sft** Ellipsoid Height: **744.80sft** **Geoid03**

Latitude: **42°04'05.06697"N** Longitude: **91°26'36.17475"W**

Mapping Angle: **1°23'38"** Combination Scale Factor: **0.99996421**

Monument Type: Aluminum Cap on 6-foot Rebar set in a 6" dia. PVC pipe with an aluminum access cover.



Prepared by DCI and GBC for Linn Co. and the City of Cedar Rapids, Iowa (Revised 08-05-05).