

Linn County and the City of Cedar Rapids, Iowa
 Iowa North Zone (1401)
 Horiz. Datum: NAD83(1996)
 Vert. Datum: NAVD 1988
 US Survey Feet
2005

Point Name: **Linn 4A**

Designation: Station 4A, Set by the Surdex Corp. for Linn County in 2000

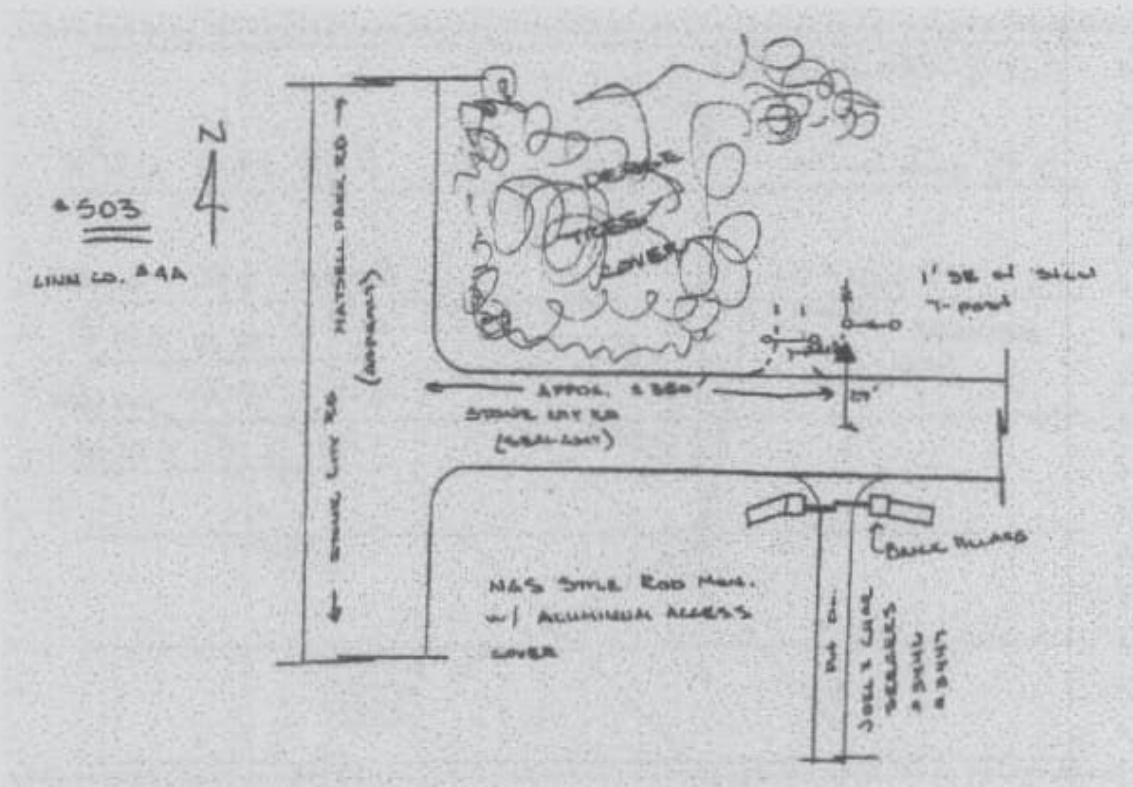
Northing: 3511331.80sft Easting: 5498156.77sft

Orthometric Height: 965.25sft Ellipsoid Height: 859.41sft **Geoid03**

Latitude: 42°06'45.33061"N Longitude: 91°22'25.02384"W

Mapping Angle: 1°26'28" Combination Scale Factor: 0.99995097

Monument Type: Aluminum Cap on 6-foot Rebar set in a 6" dia. PVC pipe with an aluminum access cover.



Prepared by DCI and GBC for Linn Co. and the City of Cedar Rapids, Iowa (Revised 08-05-05).