

Linn County and the City of Cedar Rapids, Iowa
 Iowa North Zone (1401)
 Horiz. Datum: NAD83(1996)
 Vert. Datum: NAVD 1988
 US Survey Feet
 2005

Point Name: **Linn 5**

Designation: Station 5, Set by the Surdex Corp. for Linn County in 2000

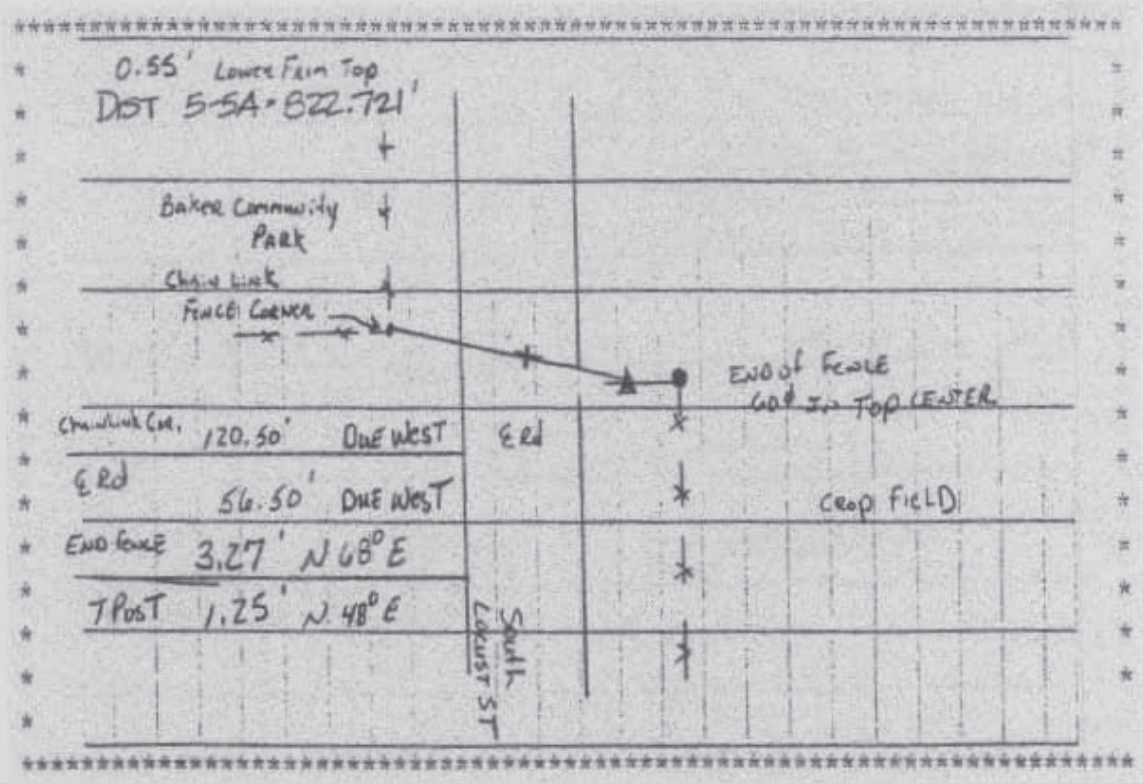
Northing: **3555481.10**sft Easting: **5483835.44**sft

Orthometric Height: **970.47**sft Ellipsoid Height: **866.06**sft **Geoid03**

Latitude: **42°14'04.85421"N** Longitude: **91°25'20.58221"W**

Mapping Angle: **1°24'29"** Combination Scale Factor: **0.99993243**

Monument Type: Aluminum Cap on 6-foot Rebar set in a 6" dia. PVC pipe with an aluminum access cover.



Prepared by DCI and GBC for Linn Co. and the City of Cedar Rapids, Iowa (Revised 08-05-05).