

**Linn County and the City of Cedar Rapids, Iowa**  
 Iowa North Zone (1401)  
 Horiz. Datum: NAD83(1996)  
 Vert. Datum: NAVD 1988  
 US Survey Feet  
**2005**

Point Name: **Linn 7**

**Designation:** Station 7, Set by the Surdex Corp. for Linn County in 2000

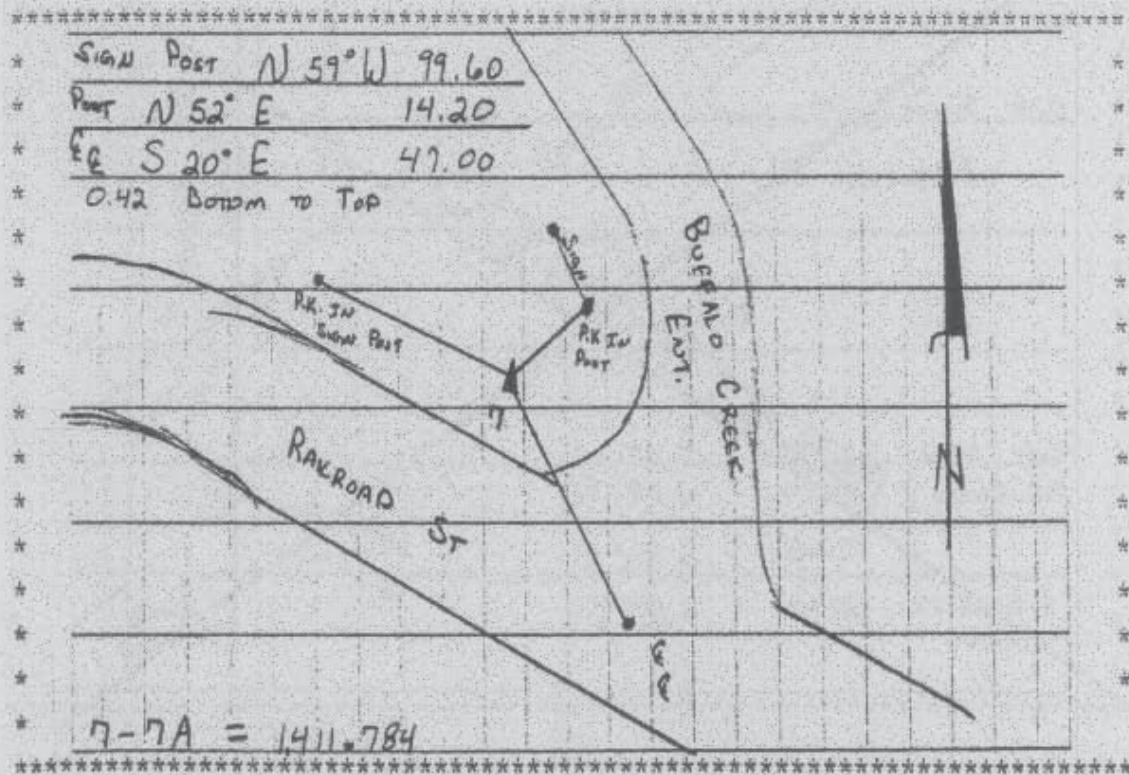
Northing: **3571823.01sft** Easting: **5451673.42sft**

Orthometric Height: **910.27sft** Ellipsoid Height: **807.07sft** **Geoid03**

Latitude: **42°16'53.83286"N** Longitude: **91°32'22.97264"W**

Mapping Angle: **1°19'43"** Combination Scale Factor: **0.99992943**

**Monument Type:** Aluminum Cap on 6-foot Rebar set in a 6" dia. PVC pipe with an aluminum access cover.



Prepared by DCI and GBC for Linn Co. and the City of Cedar Rapids, Iowa (Revised 08-05-05).