

Linn County and the City of Cedar Rapids, Iowa
 Iowa North Zone (1401)
 Horiz. Datum: NAD83(1996)
 Vert. Datum: NAVD 1988
 US Survey Feet
 2005

Point Name: **Linn 9**

Designation: Station 9, Set by the Surdex Corp. for Linn County in 2000

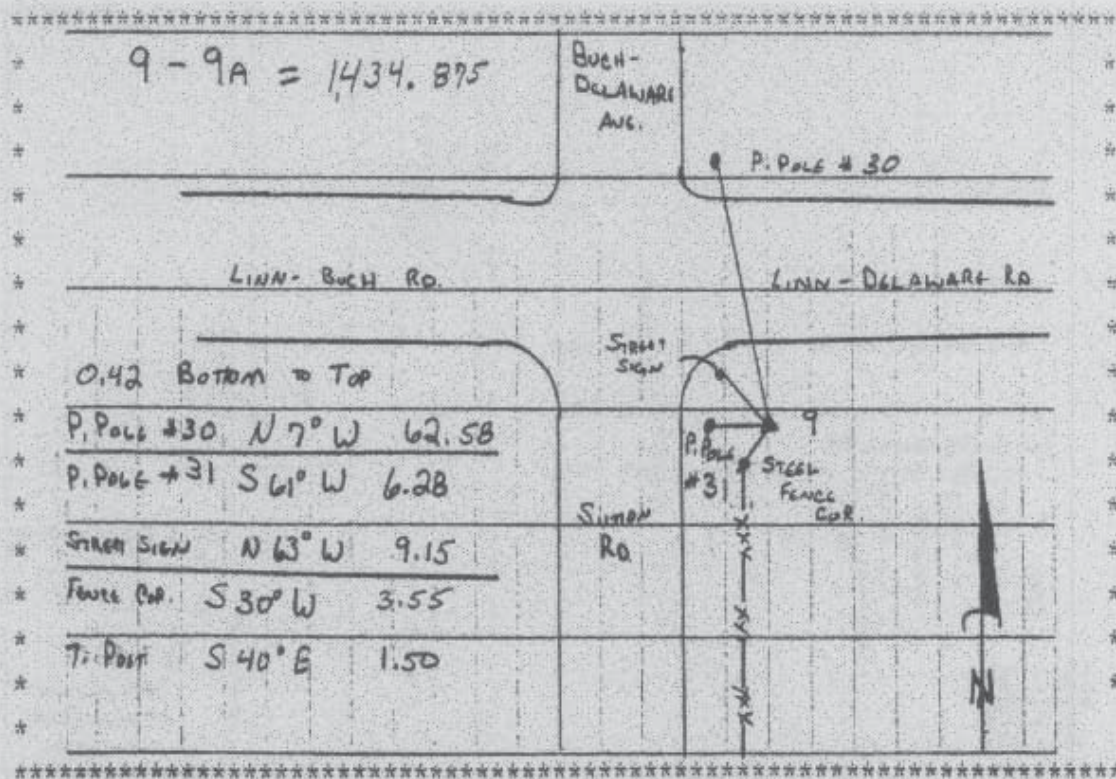
Northing: **3576824.94sft** Easting: **5436095.50sft**

Orthometric Height: **997.45sft** Ellipsoid Height: **894.71sft** **Geoid03**

Latitude: **42°17'46.74876"N** Longitude: **91°35'48.66042"W**

Mapping Angle: **1°17'23"** Combination Scale Factor: **0.99992356**

Monument Type: Aluminum Cap on 6-foot Rebar set in a 6" dia. PVC pipe with an aluminum access cover.



Prepared by DCI and GBC for Linn Co. and the City of Cedar Rapids, Iowa (Revised 08-05-05).