

**Louisa County, Iowa**  
 Iowa South Zone (1402)  
 Horiz. Datum: NAD83(NSRS2007)  
 Vert. Datum: NAVD 1988  
 US Survey Feet  
**2007**

Point Name: **1**

**Designation:** 2006-001 Louisa Co GPS Control Pt.

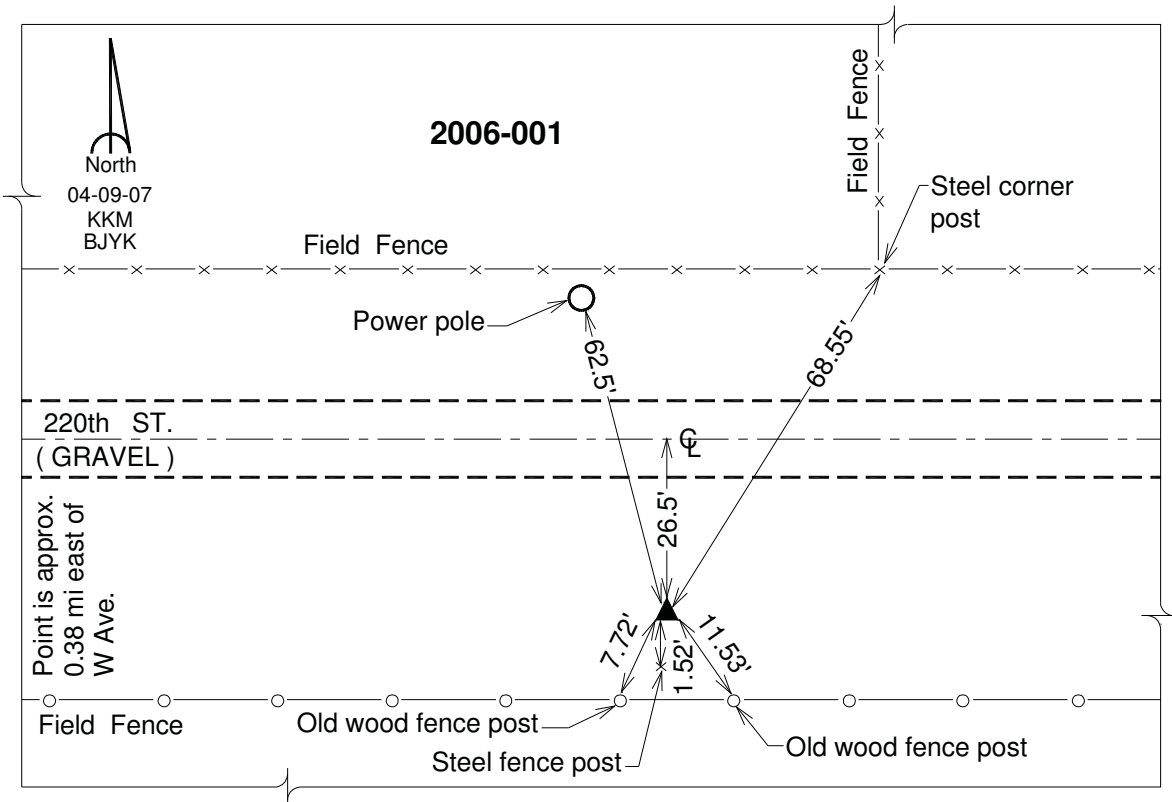
Northing: **512257.37**sft Easting: **2208673.67**sft

Orthometric Height: **615.30**sft Ellipsoid Height: **507.72**sft **Geoid03**

Latitude: **41°23'14.78399"N** Longitude: **91°25'43.97689"W**

Mapping Angle: **1°21'51"** Combination Scale Factor: **0.99992943**

**Monument Type:** Berntsen Top Security Rod Monument with a 2-1/2" dia. domed survey cap and permanent magnet encased in a white PVC pipe with a NGS style aluminum access cover.



*This document was prepared by DCI and GBC for use by Louisa County, Iowa.*