

Louisa County, Iowa
 Iowa South Zone (1402)
 Horiz. Datum: NAD83(NSRS2007)
 Vert. Datum: NAVD 1988
 US Survey Feet
2007

Point Name: **2**

Designation: 2006-002 Louisa Co GPS Control Pt.

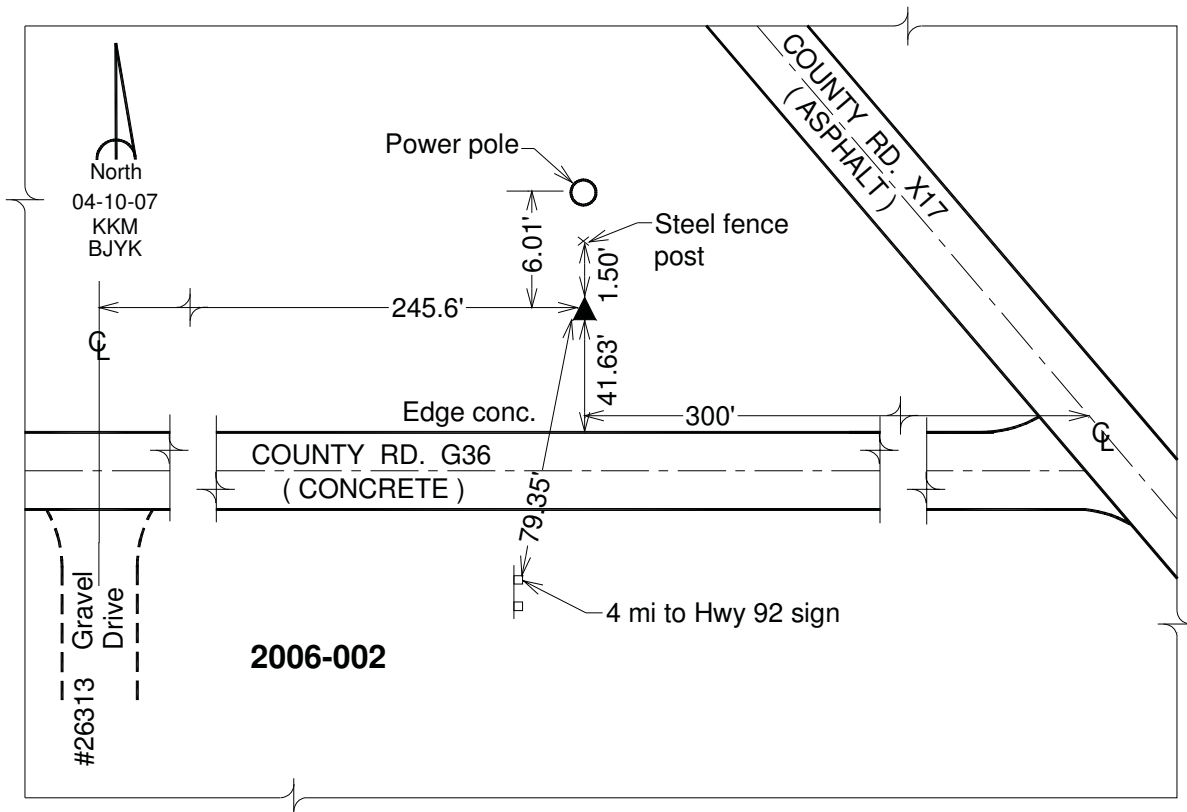
Northing: **493698.30**sft Easting: **2208719.87**sft

Orthometric Height: **728.71**sft Ellipsoid Height: **621.08**sft **Geoid03**

Latitude: **41°20'11.45266"N** Longitude: **91°25'49.16398"W**

Mapping Angle: **1°21'48"** Combination Scale Factor: **0.99992153**

Monument Type: Berntsen Top Security Rod Monument with a 2-1/2" dia. domed survey cap and permanent magnet encased in a white PVC pipe with a NGS style aluminum access cover.



This document was prepared by DCI and GBC for use by Louisa County, Iowa.