

Louisa County, Iowa
 Iowa South Zone (1402)
 Horiz. Datum: NAD83(NSRS2007)
 Vert. Datum: NAVD 1988
 US Survey Feet
2007

Point Name: **3**

Designation: 2006-003 Louisa Co GPS Control Pt.

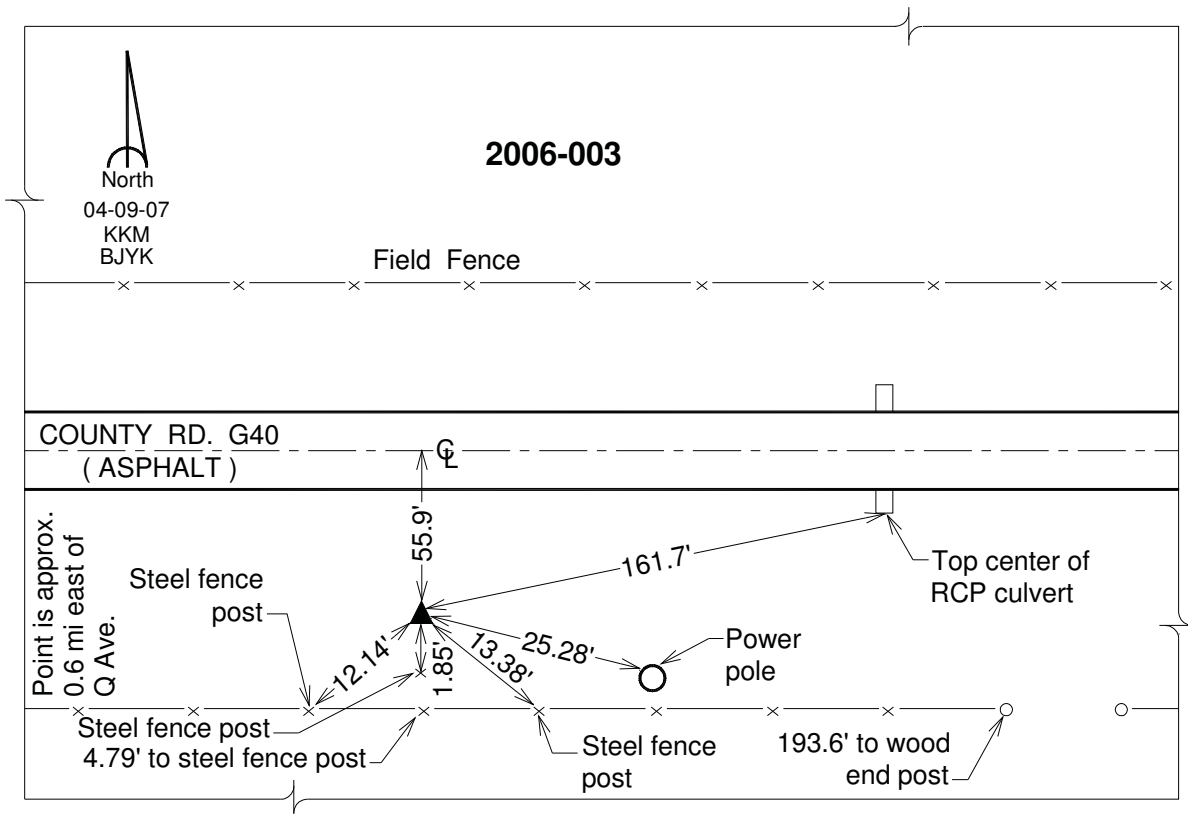
Northing: **491399.80**sft Easting: **2240667.87**sft

Orthometric Height: **672.39**sft Ellipsoid Height: **564.62**sft **Geoid03**

Latitude: **41°19'41.02826"N** Longitude: **91°18'51.23301"W**

Mapping Angle: **1°26'23"** Combination Scale Factor: **0.99992388**

Monument Type: Berntsen Top Security Rod Monument with a 2-1/2" dia. domed survey cap and permanent magnet encased in a white PVC pipe with a NGS style aluminum access cover.



This document was prepared by DCI and GBC for use by Louisa County, Iowa.