

Louisa County, Iowa
 Iowa South Zone (1402)
 Horiz. Datum: NAD83(NSRS2007)
 Vert. Datum: NAVD 1988
 US Survey Feet
2007

Point Name: **5**

Designation: 2006-005 Louisa Co GPS Control Pt.

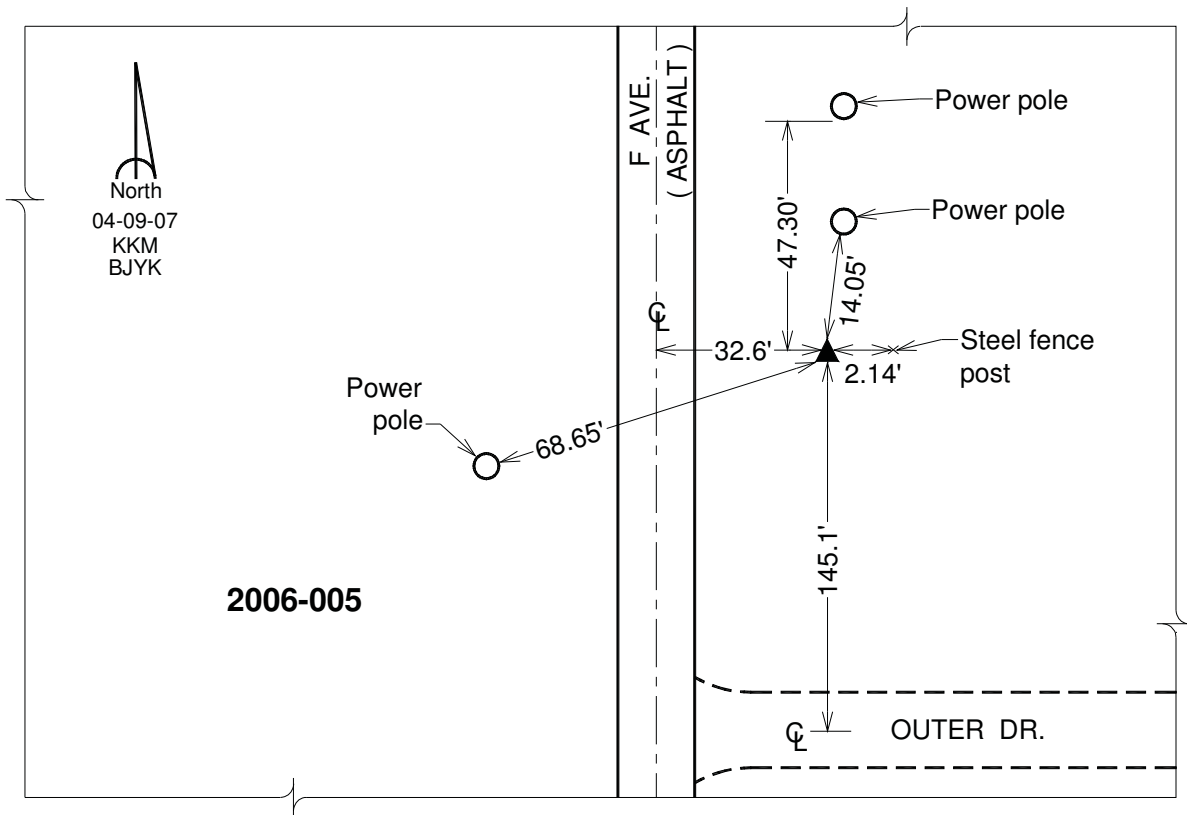
Northing: **484845.32**sft Easting: **2299752.93**sft

Orthometric Height: **547.64**sft Ellipsoid Height: **439.75**sft **Geoid03**

Latitude: **41°18'20.90102"N** Longitude: **91°05'59.42561"W**

Mapping Angle: **1°34'52"** Combination Scale Factor: **0.99992906**

Monument Type: Berntsen Top Security Rod Monument with a 2-1/2" dia. domed survey cap and permanent magnet encased in a white PVC pipe with a NGS style aluminum access cover.



This document was prepared by DCI and GBC for use by Louisa County, Iowa.