

Louisa County, Iowa
Iowa South Zone (1402)
Horiz. Datum: NAD83(NSRS2007)
Vert. Datum: NAVD 1988
US Survey Feet
2007

Point Name: **6**

Designation: 2006-006 Louisa Co GPS Control Pt.

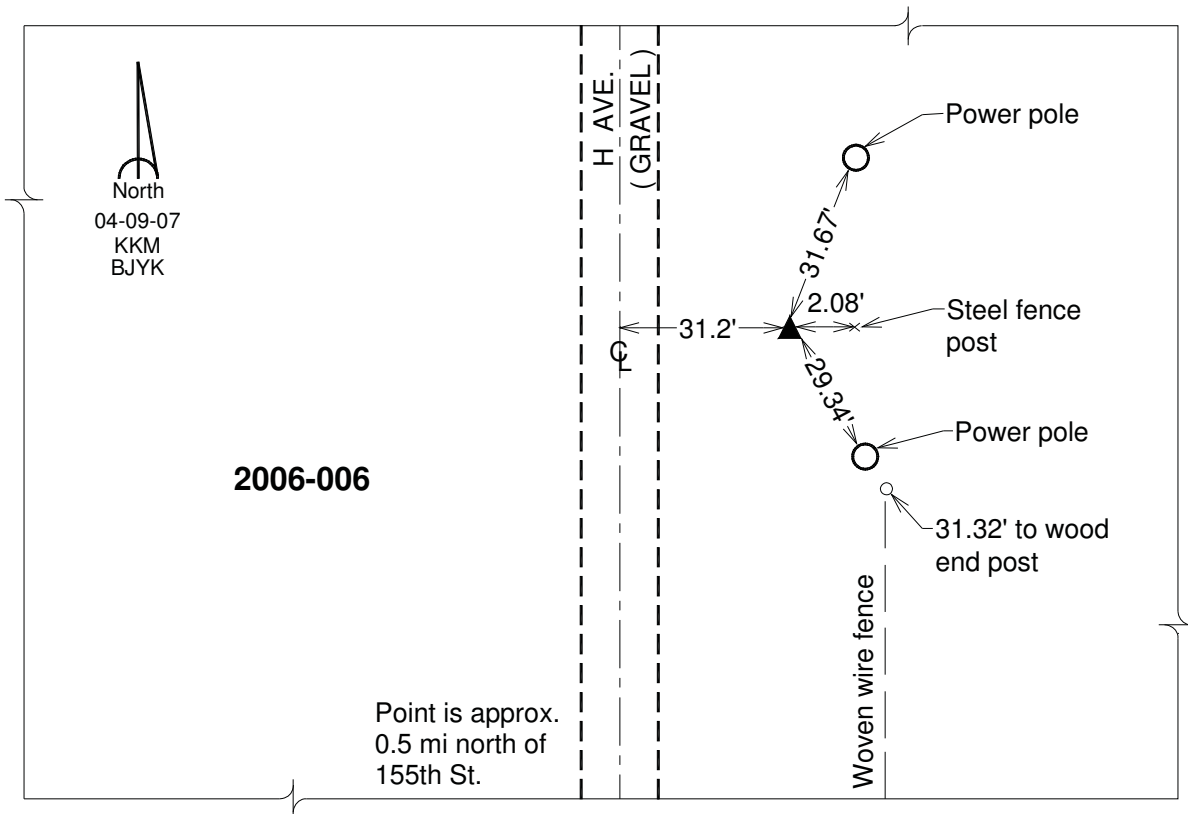
Northing: **479077.39**sft Easting: **2287828.55**sft

Orthometric Height: **537.66**sft Ellipsoid Height: **429.75**sft **Geoid03**

Latitude: **41°17'27.15255"N** Longitude: **91°08'37.66398"W**

Mapping Angle: **1°33'07"** Combination Scale Factor: **0.99992909**

Monument Type: Berntsen Top Security Rod Monument with a 2-1/2" dia. domed survey cap and permanent magnet encased in a white PVC pipe with a NGS style aluminum access cover.



This document was prepared by DCI and GBC for use by Louisa County, Iowa.