

Louisa County, Iowa
Iowa South Zone (1402)
Horiz. Datum: NAD83(NSRS2007)
Vert. Datum: NAVD 1988
US Survey Feet
2007

Point Name: **8**

Designation: NGS 2nd order horiz control station "CONCORD" PID: MG0810

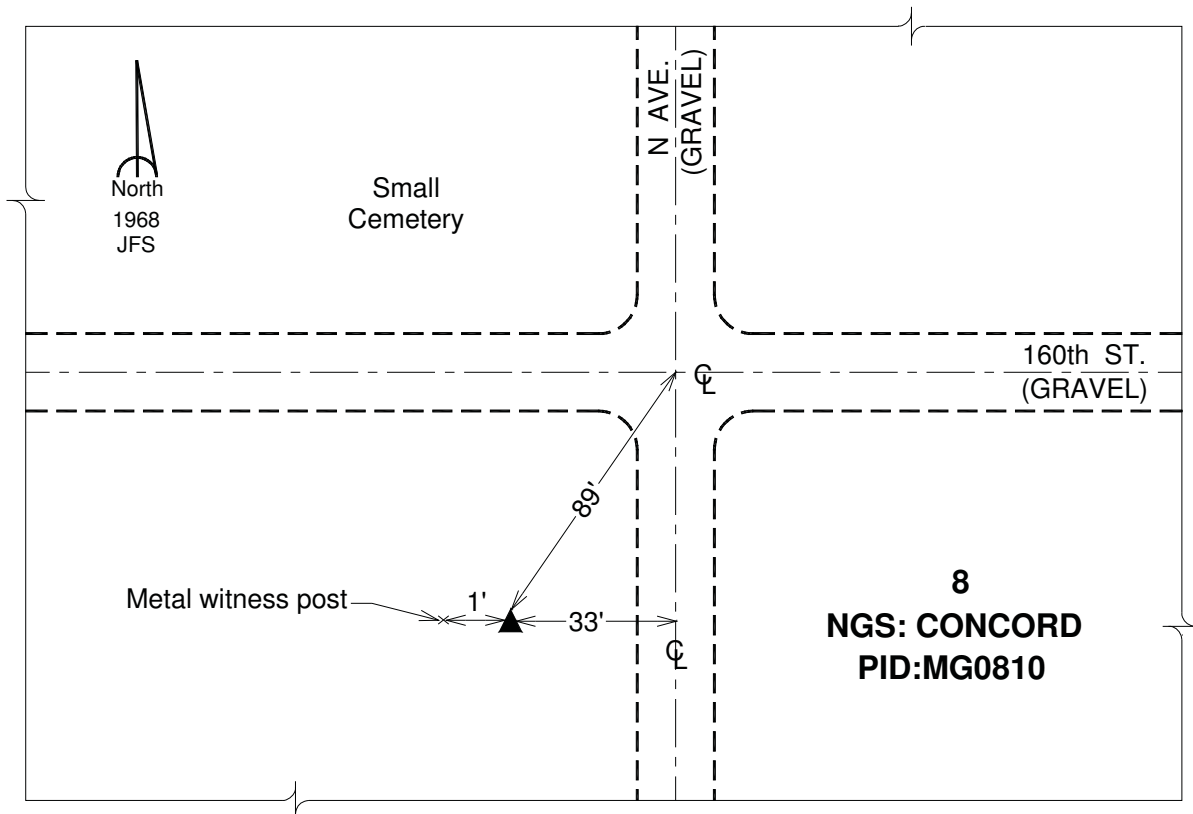
Northing: **478579.91**sft Easting: **2257502.97**sft

Orthometric Height: **676.72**sft Ellipsoid Height: **568.84**sft **Geoid03**

Latitude: **41°17'30.16438"N** Longitude: **91°15'14.97460"W**

Mapping Angle: **1°28'46"** Combination Scale Factor: **0.99992248**

Monument Type: The station is a standard tablet stamped "CONCORD 1968" crimped on a 10ft length of copper clad rod driven flush with the ground and set in a tile filled with gravel.



This document was prepared by DCI and GBC for use by Louisa County, Iowa.