

**Louisa County, Iowa**  
Iowa South Zone (1402)  
Horiz. Datum: NAD83(NSRS2007)  
Vert. Datum: NAVD 1988  
US Survey Feet  
**2007**

Point Name: **9**

**Designation:** 2006-009 Louisa Co GPS Control Pt.

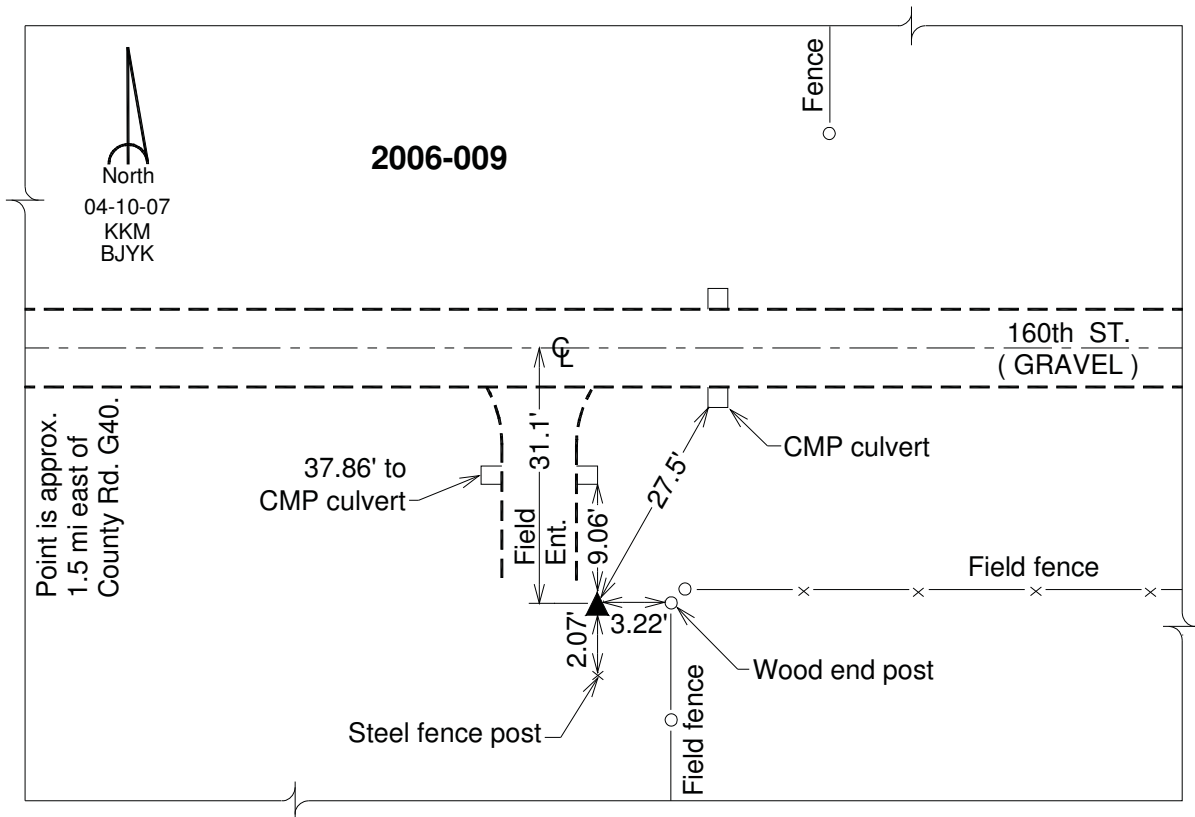
Northing: **478198.53sft**    Easting: **2241685.77sft**

Orthometric Height: **601.99sft**    Ellipsoid Height: **494.12sft**    **Geoid03**

Latitude: **41°17'30.38032"N**    Longitude: **91°18'42.24759"W**

Mapping Angle: **1°26'29"**    Combination Scale Factor: **0.99992605**

**Monument Type:** Berntsen Top Security Rod Monument with a 2-1/2" dia. domed survey cap and permanent magnet encased in a white PVC pipe with a NGS style aluminum access cover.



*This document was prepared by DCI and GBC for use by Louisa County, Iowa.*