

Louisa County, Iowa
Iowa South Zone (1402)
Horiz. Datum: NAD83(NSRS2007)
Vert. Datum: NAVD 1988
US Survey Feet
2007

Point Name: **10**

Designation: NGS 2nd order horiz control station "COLUMBUS" PID: MG0813

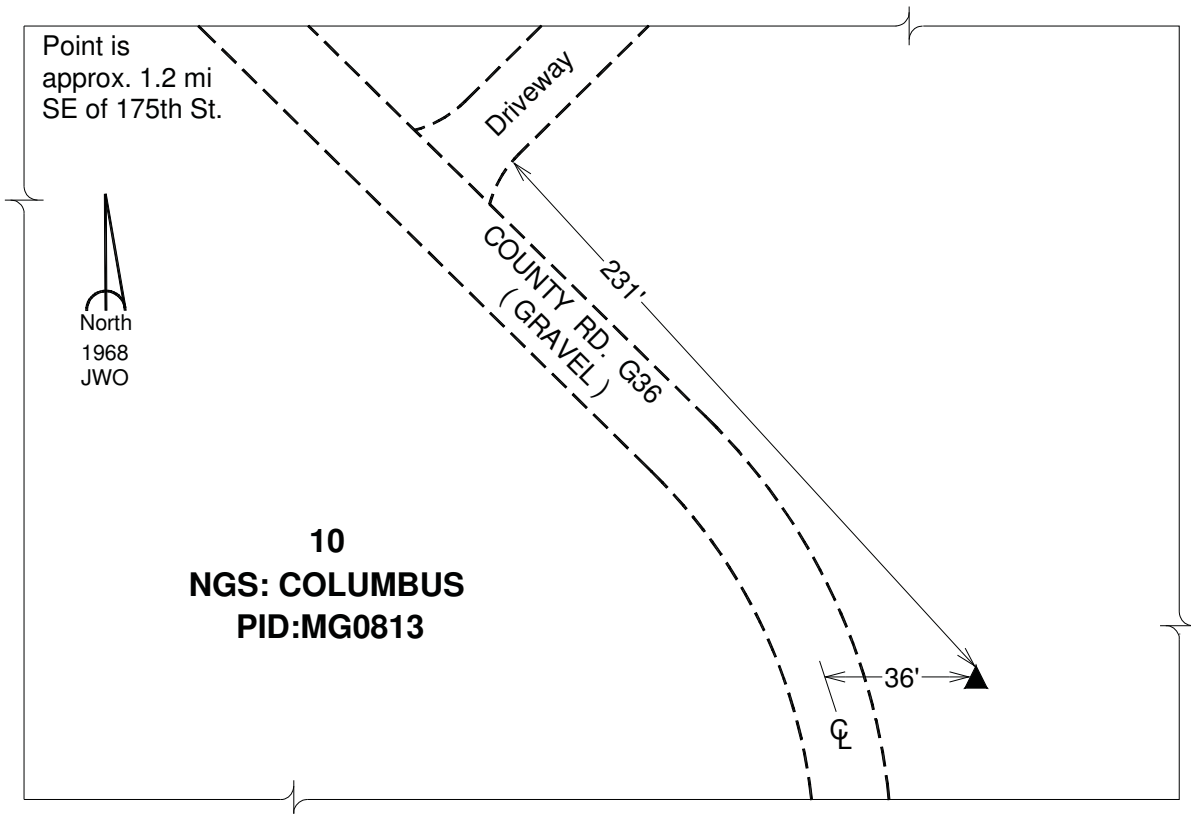
Northing: **480637.89sft** Easting: **2225981.49sft**

Orthometric Height: **710.12sft** Ellipsoid Height: **602.33sft** **Geoid03**

Latitude: **41°17'58.32774"N** Longitude: **91°22'07.13672"W**

Mapping Angle: **1°24'14"** Combination Scale Factor: **0.99992111**

Monument Type: The station is a standard tablet stamped "COLUMBUS 1968" crimped on a 10ft length of copper clad rod driven flush with the ground and set in a tile filled with gravel.



This document was prepared by DCI and GBC for use by Louisa County, Iowa.