

Louisa County, Iowa
 Iowa South Zone (1402)
 Horiz. Datum: NAD83(NSRS2007)
 Vert. Datum: NAVD 1988
 US Survey Feet
2007

Point Name: **11**

Designation: 2006-011 Louisa Co GPS Control Pt.

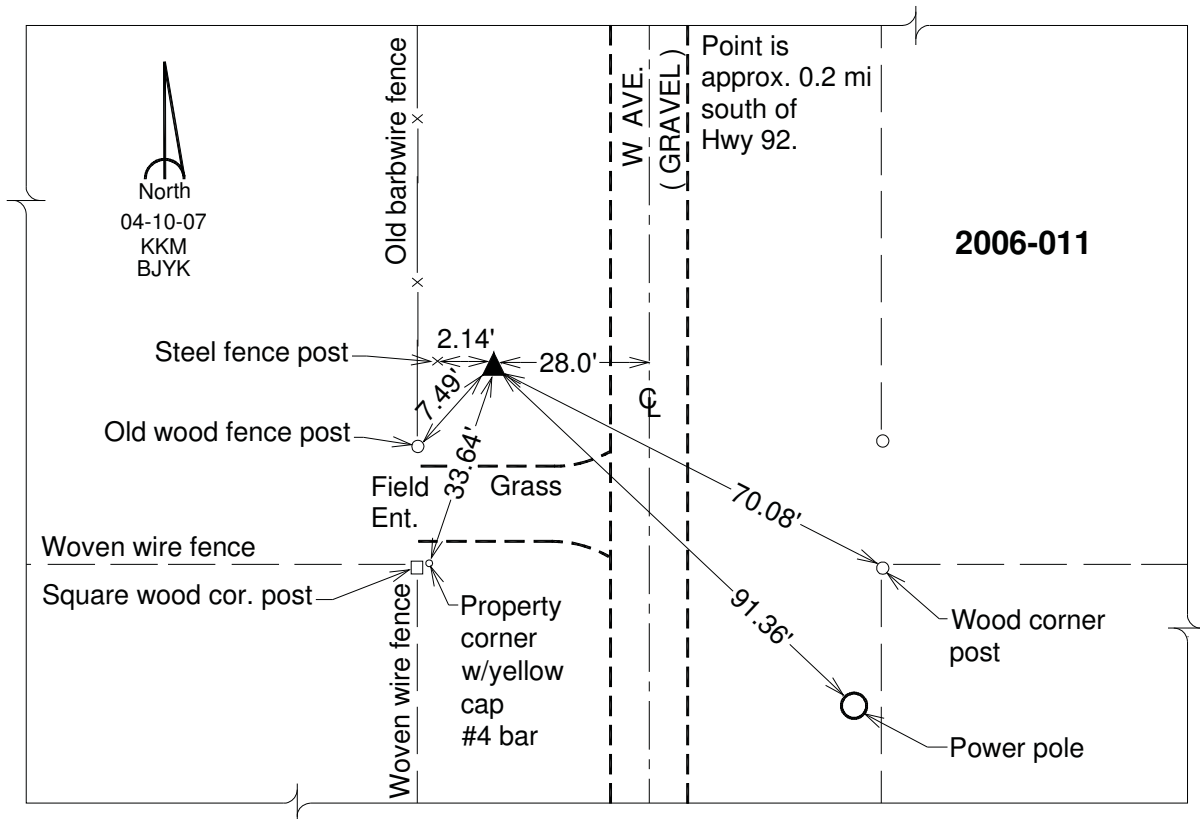
Northing: **475065.83sft** Easting: **2208828.98sft**

Orthometric Height: **712.10sft** Ellipsoid Height: **604.34sft** **Geoid03**

Latitude: **41°17'07.37946"N** Longitude: **91°25'53.54200"W**

Mapping Angle: **1°21'45"** Combination Scale Factor: **0.99992062**

Monument Type: Berntsen Top Security Rod Monument with a 2-1/2" dia. domed survey cap and permanent magnet encased in a white PVC pipe with a NGS style aluminum access cover.



This document was prepared by DCI and GBC for use by Louisa County, Iowa.