

**Louisa County, Iowa**  
 Iowa South Zone (1402)  
 Horiz. Datum: NAD83(NSRS2007)  
 Vert. Datum: NAVD 1988  
 US Survey Feet  
**2007**

Point Name: **12**

**Designation:** 2006-012 Louisa Co GPS Control Pt.

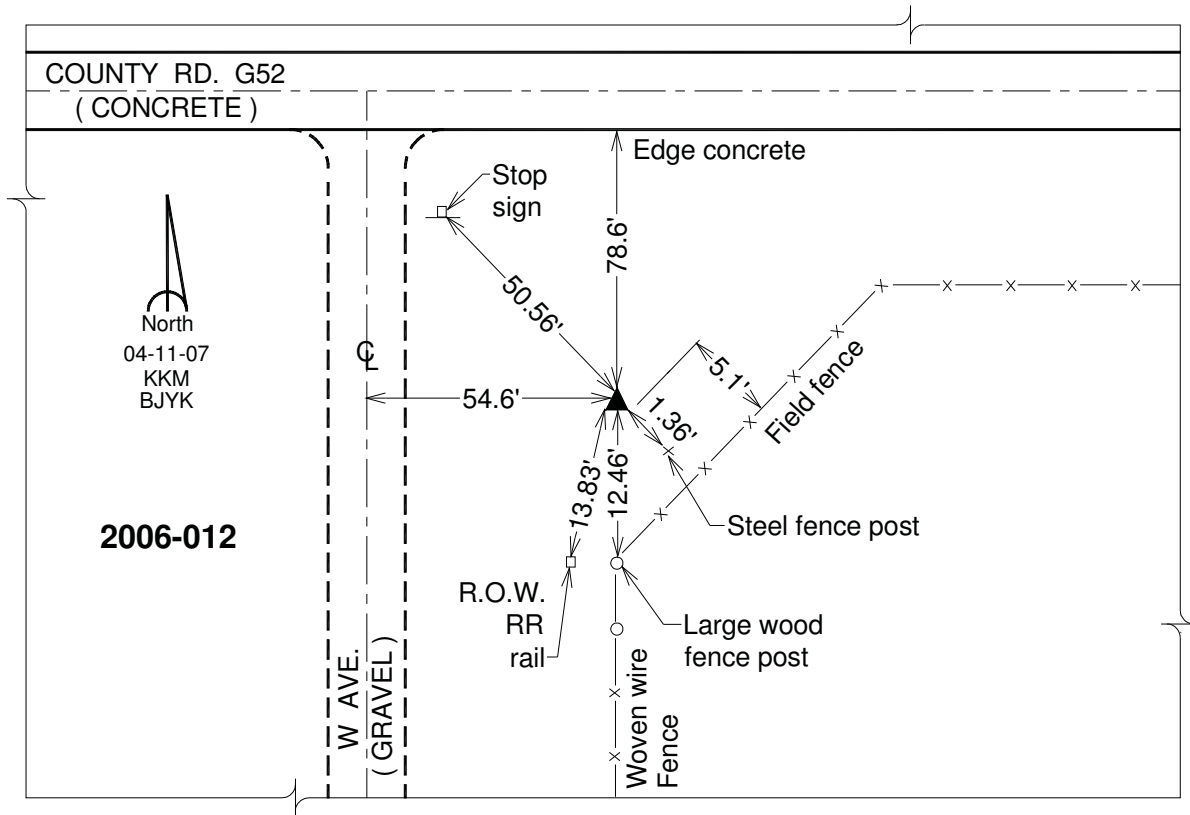
Northing: **461715.22sft**    Easting: **2210175.90sft**

Orthometric Height: **646.74sft**    Ellipsoid Height: **538.90sft**    **Geoid03**

Latitude: **41°14'55.18705"N**    Longitude: **91°25'40.06937"W**

Mapping Angle: **1°21'54"**    Combination Scale Factor: **0.99992300**

**Monument Type:** Berntsen Top Security Rod Monument with a 2-1/2" dia. domed survey cap and permanent magnet encased in a white PVC pipe with a NGS style aluminum access cover.



*This document was prepared by DCI and GBC for use by Louisa County, Iowa.*