

Louisa County, Iowa
 Iowa South Zone (1402)
 Horiz. Datum: **NAD83(NA2011)**
 Vert. Datum: NAVD 1988
 US Survey Feet
2012

Point Name: **13**

Designation: 2012-013 RESET Louisa Co GPS Control Pt.

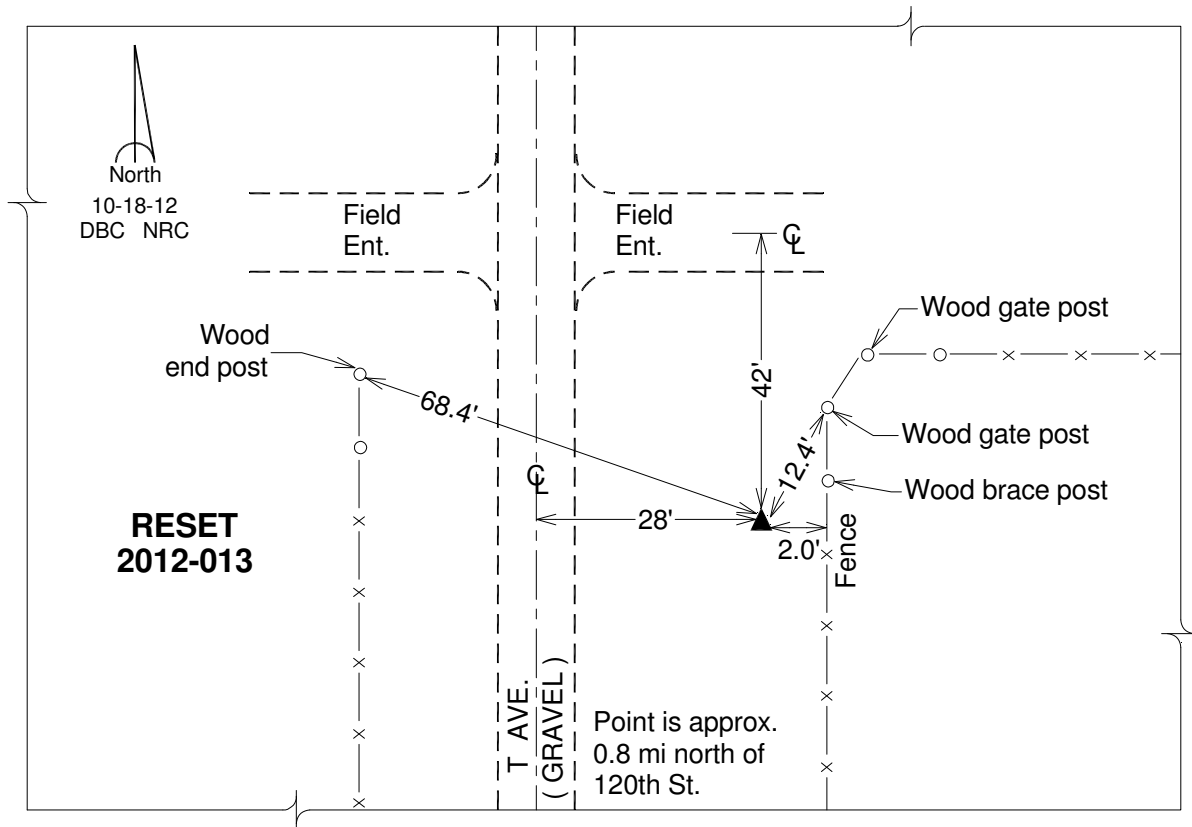
Northing: **460618.84sft** Easting: **2226160.38sft**

Orthometric Height: **724.38sft** Ellipsoid Height: **616.23sft** **Geoid12A**

Latitude: **N41°14'40.54236"** Longitude: **W91°22'11.21650"**

Mapping Angle: **1°24'11"** Combination Scale Factor: **0.999919256**

Monument Type: Berntsen Top Security Rod Monument with a 2-1/2" dia. domed survey cap and permanent magnet encased in a white PVC pipe with a NGS style aluminum access cover.



This document was prepared by DCI and GBC for use by Louisa County, Iowa.