

Louisa County, Iowa
Iowa South Zone (1402)
Horiz. Datum: NAD83(NSRS2007)
Vert. Datum: NAVD 1988
US Survey Feet
2007

Point Name: **14**

Designation: 2006-014 Louisa Co GPS Control Pt.

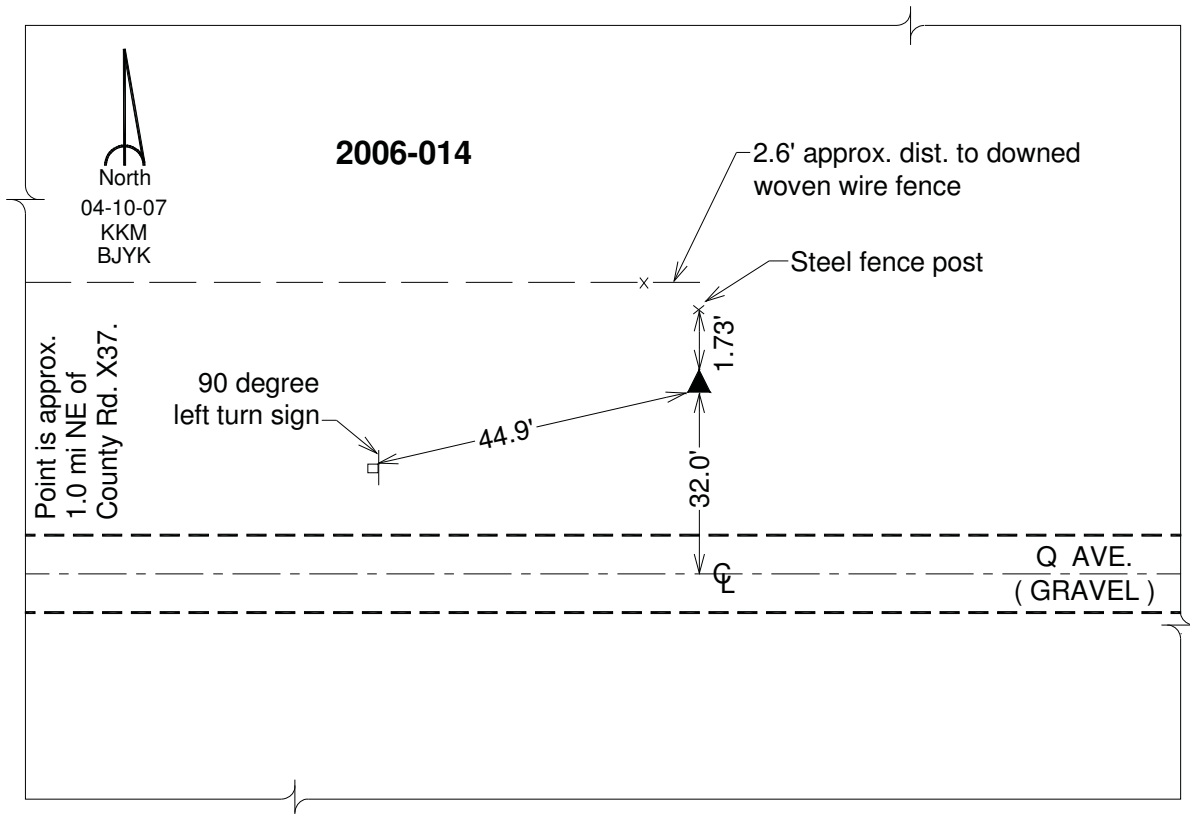
Northing: **463658.01**sft Easting: **2238819.35**sft

Orthometric Height: **713.65**sft Ellipsoid Height: **605.68**sft **Geoid03**

Latitude: **41°15'07.46612"N** Longitude: **91°19'24.55334"W**

Mapping Angle: **1°26'01"** Combination Scale Factor: **0.99991987**

Monument Type: Berntsen Top Security Rod Monument with a 2-1/2" dia. domed survey cap and permanent magnet encased in a white PVC pipe with a NGS style aluminum access cover.



This document was prepared by DCI and GBC for use by Louisa County, Iowa.