

Louisa County, Iowa
 Iowa South Zone (1402)
 Horiz. Datum: NAD83(NSRS2007)
 Vert. Datum: NAVD 1988
 US Survey Feet
2007

Point Name: **15**

Designation: 2006-015 Louisa Co GPS Control Pt.

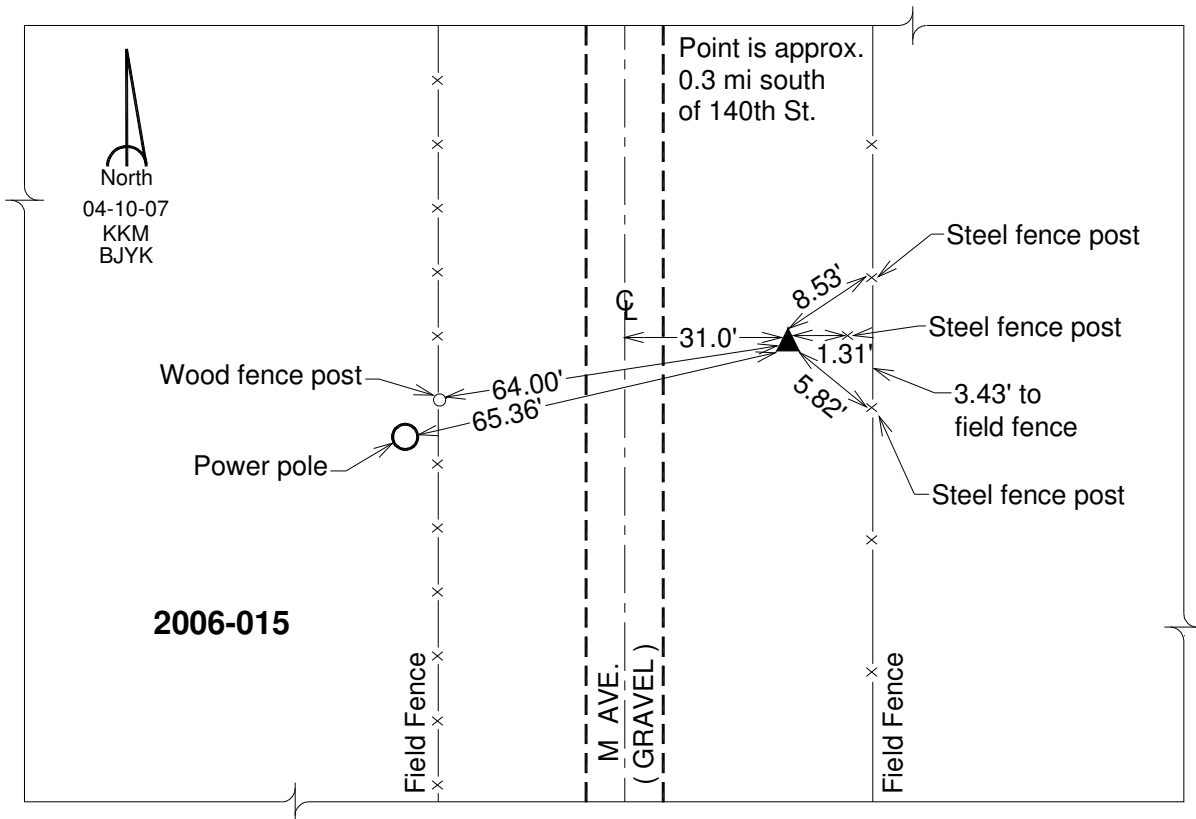
Northing: **463712.54**sft Easting: **2259387.92**sft

Orthometric Height: **589.17**sft Ellipsoid Height: **481.16**sft **Geoid03**

Latitude: **41°15'02.83259"N** Longitude: **91°14'55.32959"W**

Mapping Angle: **1°28'59"** Combination Scale Factor: **0.99992579**

Monument Type: Berntsen Top Security Rod Monument with a 2-1/2" dia. domed survey cap and permanent magnet encased in a white PVC pipe with a NGS style aluminum access cover.



This document was prepared by DCI and GBC for use by Louisa County, Iowa.