

Louisa County, Iowa
 Iowa South Zone (1402)
 Horiz. Datum: NAD83(NSRS2007)
 Vert. Datum: NAVD 1988
 US Survey Feet
2007

Point Name: **16**

Designation: 2006-016 Louisa Co GPS Control Pt.

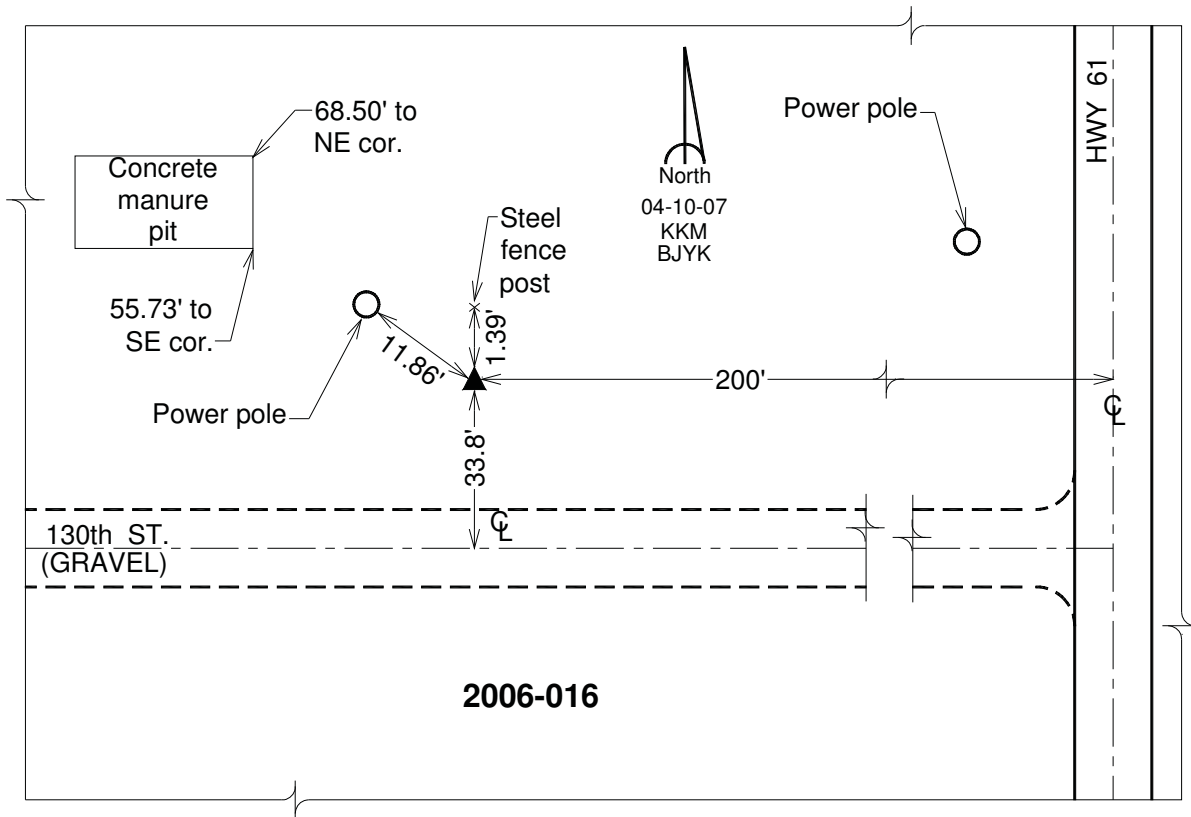
Northing: **462901.76**sft Easting: **2273320.62**sft

Orthometric Height: **634.57**sft Ellipsoid Height: **526.55**sft **Geoid03**

Latitude: **41°14'51.22165"N** Longitude: **91°11'53.26311"W**

Mapping Angle: **1°30'58"** Combination Scale Factor: **0.99992358**

Monument Type: Berntsen Top Security Rod Monument with a 2-1/2" dia. domed survey cap and permanent magnet encased in a white PVC pipe with a NGS style aluminum access cover.



This document was prepared by DCI and GBC for use by Louisa County, Iowa.