

Louisa County, Iowa
Iowa South Zone (1402)
Horiz. Datum: NAD83(NSRS2007)
Vert. Datum: NAVD 1988
US Survey Feet
2007

Point Name: **18**

Designation: 2006-018 Louisa Co GPS Control Pt.

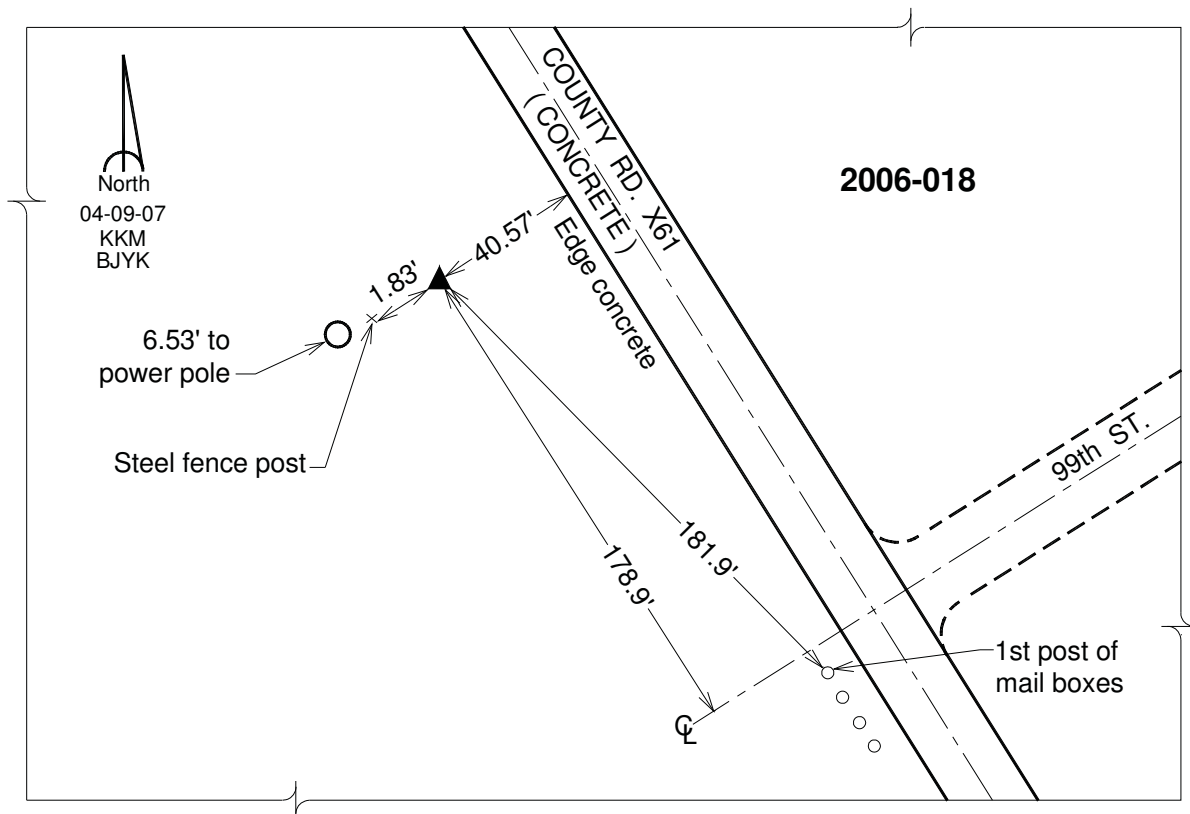
Northing: **447021.06sft** Easting: **2295111.87sft**

Orthometric Height: **666.78sft** Ellipsoid Height: **558.68sft** **Geoid03**

Latitude: **41°12'08.57187"N** Longitude: **91°07'13.77260"W**

Mapping Angle: **1°34'03"** Combination Scale Factor: **0.99992171**

Monument Type: Berntsen Top Security Rod Monument with a 2-1/2" dia. domed survey cap and permanent magnet encased in a white PVC pipe with a NGS style aluminum access cover.



This document was prepared by DCI and GBC for use by Louisa County, Iowa.