

**Louisa County, Iowa**  
 Iowa South Zone (1402)  
 Horiz. Datum: NAD83(NSRS2007)  
 Vert. Datum: NAVD 1988  
 US Survey Feet  
**2007**

Point Name: **19**

**Designation:** 2006-019 Louisa Co GPS Control Pt.

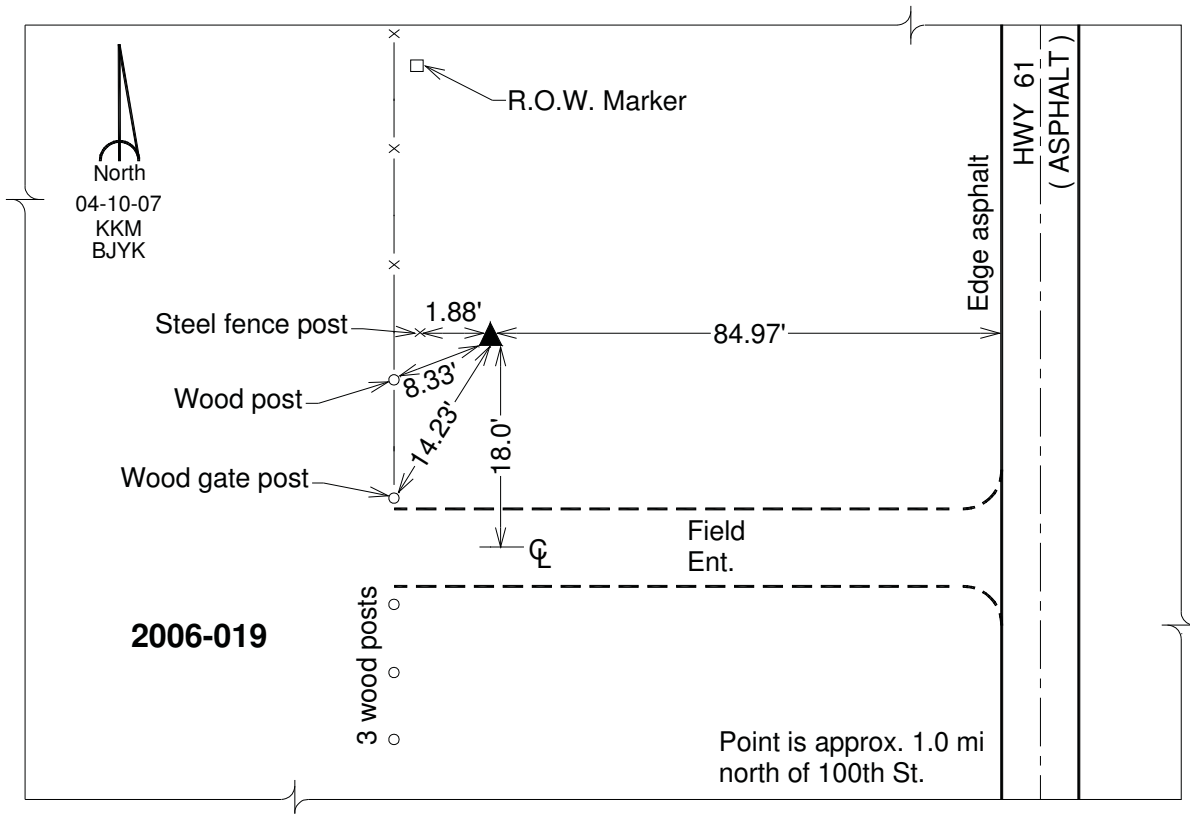
Northing: **446980.34sft** Easting: **2273764.68sft**

Orthometric Height: **562.94sft** Ellipsoid Height: **454.80sft** **Geoid03**

Latitude: **41°12'13.84510"N** Longitude: **91°11'52.96712"W**

Mapping Angle: **1°30'59"** Combination Scale Factor: **0.99992667**

**Monument Type:** Berntsen Top Security Rod Monument with a 2-1/2" dia. domed survey cap and permanent magnet encased in a white PVC pipe with a NGS style aluminum access cover.



*This document was prepared by DCI and GBC for use by Louisa County, Iowa.*