

Louisa County, Iowa
Iowa South Zone (1402)
Horiz. Datum: NAD83(NSRS2007)
Vert. Datum: NAVD 1988
US Survey Feet
2007

Point Name: **20**

Designation: 2006-020 Louisa Co GPS Control Pt.

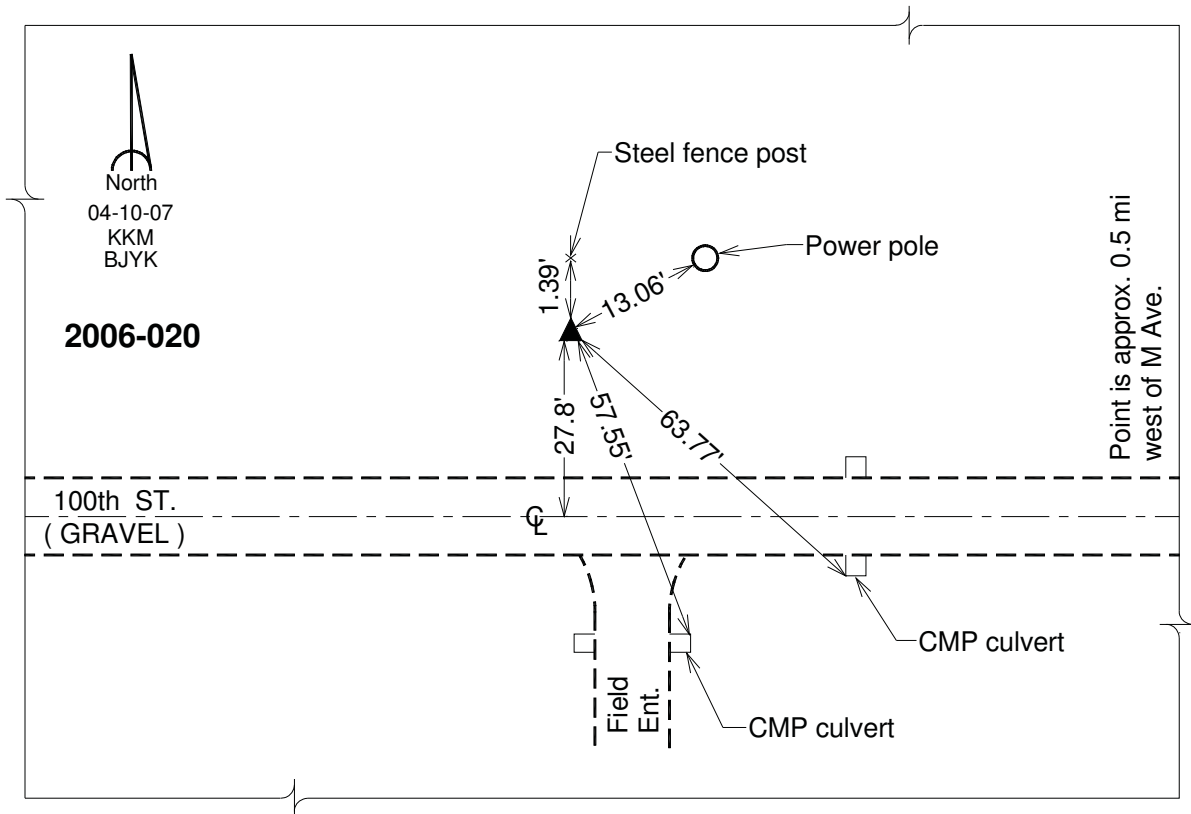
Northing: **446939.90**sft Easting: **2257466.70**sft

Orthometric Height: **589.50**sft Ellipsoid Height: **481.35**sft **Geoid03**

Latitude: **41°12'17.65212"N** Longitude: **91°15'26.13575"W**

Mapping Angle: **1°28'38"** Combination Scale Factor: **0.99992540**

Monument Type: Berntsen Top Security Rod Monument with a 2-1/2" dia. domed survey cap and permanent magnet encased in a white PVC pipe with a NGS style aluminum access cover.



This document was prepared by DCI and GBC for use by Louisa County, Iowa.