

Louisa County, Iowa
 Iowa South Zone (1402)
 Horiz. Datum: NAD83(NSRS2007)
 Vert. Datum: NAVD 1988
 US Survey Feet
2007

Point Name: **21**

Designation: 2006-021 Louisa Co GPS Control Pt.

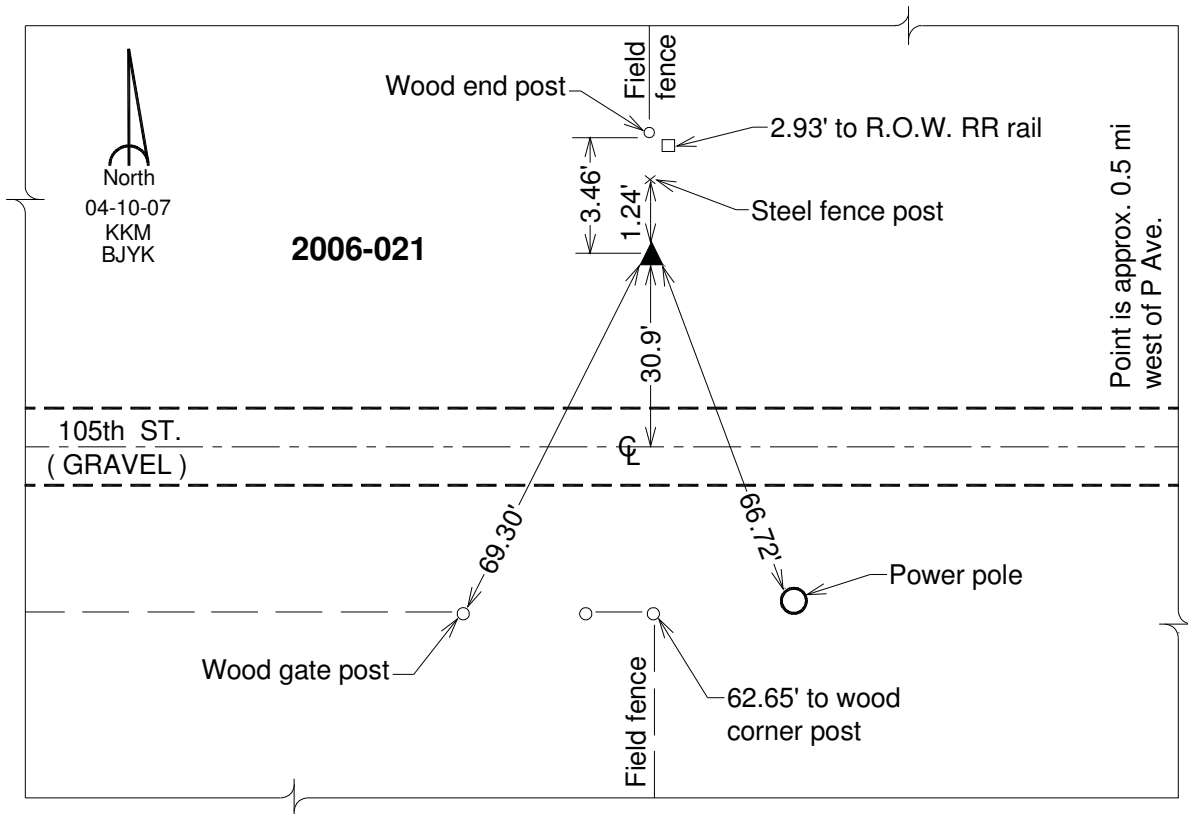
Northing: **449325.54sft** Easting: **2242104.10sft**

Orthometric Height: **654.60sft** Ellipsoid Height: **546.50sft** **Geoid03**

Latitude: **41°12'45.08130"N** Longitude: **91°18'46.27901"W**

Mapping Angle: **1°26'26"** Combination Scale Factor: **0.99992231**

Monument Type: Berntsen Top Security Rod Monument with a 2-1/2" dia. domed survey cap and permanent magnet encased in a white PVC pipe with a NGS style aluminum access cover.



This document was prepared by DCI and GBC for use by Louisa County, Iowa.