

Louisa County, Iowa
Iowa South Zone (1402)
Horiz. Datum: NAD83(NSRS2007)
Vert. Datum: NAVD 1988
US Survey Feet
2007

Point Name: **23**

Designation: 2006-023 Louisa Co GPS Control Pt.

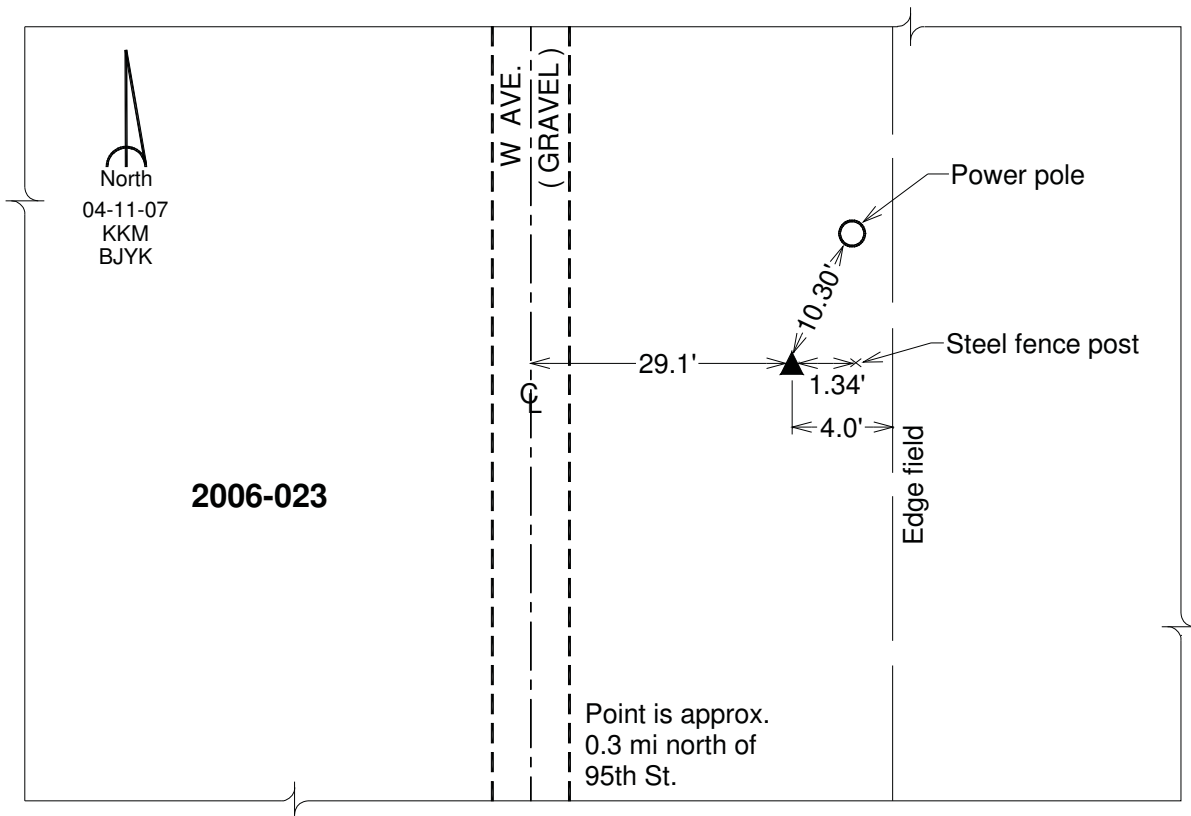
Northing: **444875.86**sft Easting: **2209167.33**sft

Orthometric Height: **696.57**sft Ellipsoid Height: **588.66**sft **Geoid03**

Latitude: **41°12'09.08581"N** Longitude: **91°25'58.50817"W**

Mapping Angle: **1°21'42"** Combination Scale Factor: **0.99992028**

Monument Type: Berntsen Top Security Rod Monument with a 2-1/2" dia. domed survey cap and permanent magnet encased in a white PVC pipe with a NGS style aluminum access cover.



This document was prepared by DCI and GBC for use by Louisa County, Iowa.