

Louisa County, Iowa
 Iowa South Zone (1402)
 Horiz. Datum: NAD83(NSRS2007)
 Vert. Datum: NAVD 1988
 US Survey Feet
2007

Point Name: **24**

Designation: 2006-024 Louisa Co GPS Control Pt.

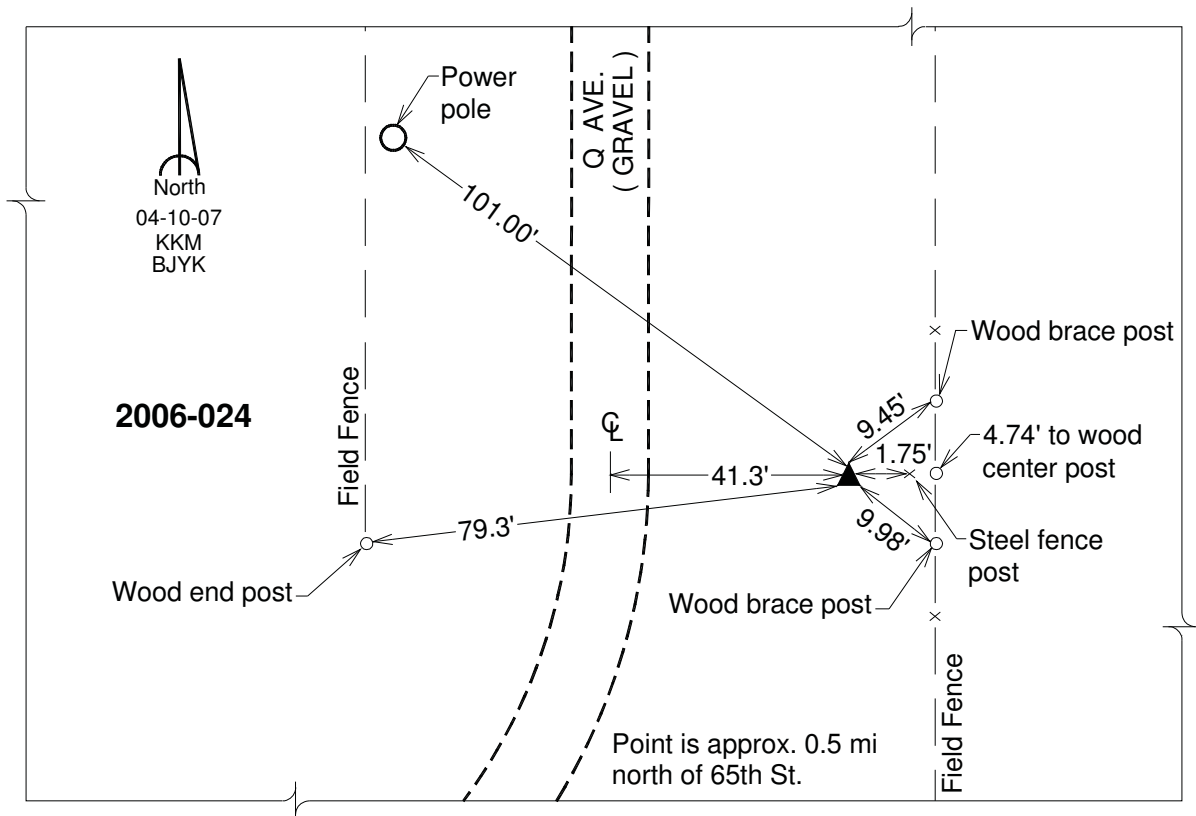
Northing: **430891.12sft** Easting: **2242665.86sft**

Orthometric Height: **666.34sft** Ellipsoid Height: **558.12sft** **Geoid03**

Latitude: **41°09'42.85226"N** Longitude: **91°18'44.99620"W**

Mapping Angle: **1°26'27"** Combination Scale Factor: **0.99992197**

Monument Type: Berntsen Top Security Rod Monument with a 2-1/2" dia. domed survey cap and permanent magnet encased in a white PVC pipe with a NGS style aluminum access cover.



This document was prepared by DCI and GBC for use by Louisa County, Iowa.