

**Louisa County, Iowa**  
Iowa South Zone (1402)  
Horiz. Datum: **NAD83(NA2011)**  
Vert. Datum: NAVD 1988  
US Survey Feet  
**2012**

Point Name: **25**

**Designation:** 2012-025 RESET Louisa Co GPS Control Pt.

Northing: **431015.51**sft Easting: **2258482.20**sft

Orthometric Height: **594.97**sft Ellipsoid Height: **486.45**sft **Geoid12A**

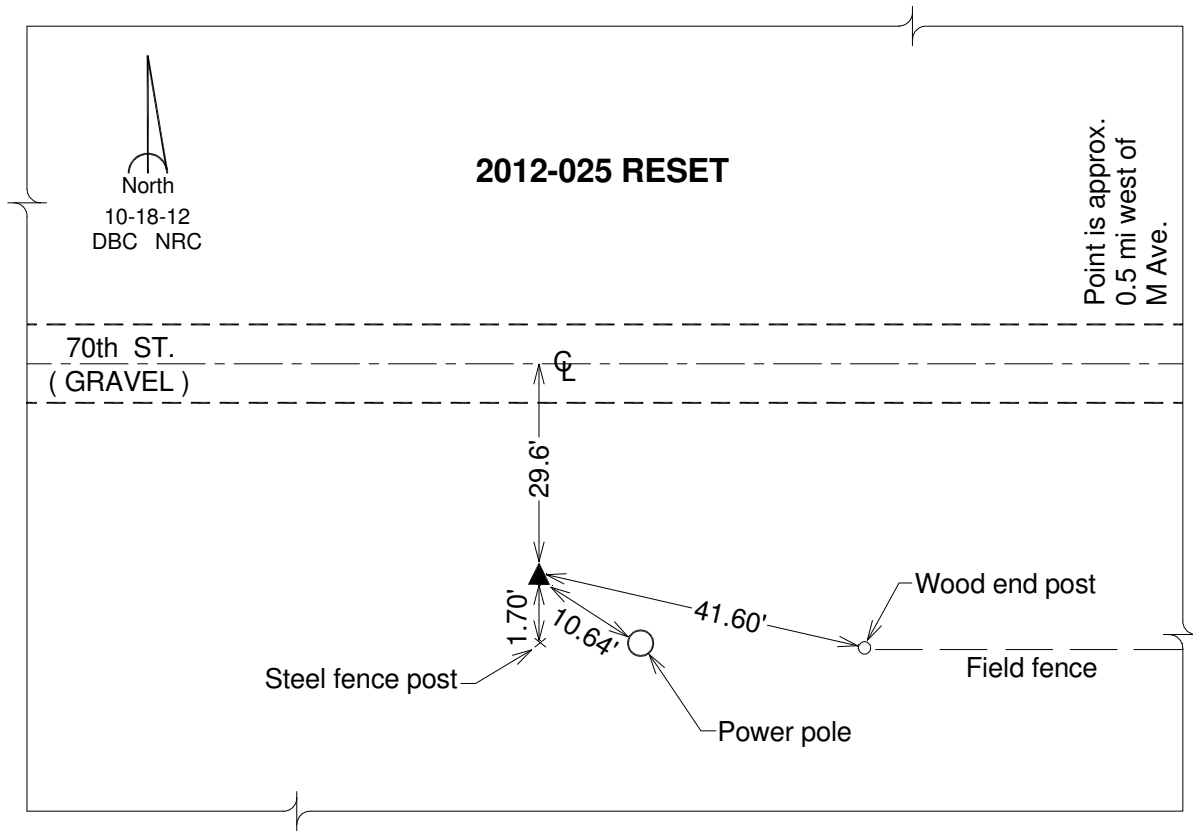
Latitude: **N41°09'40.09963"**

Longitude: **W91°15'18.23066"**

Mapping Angle: **1°28'43"**

Combination Scale Factor: **0.999925398**

**Monument Type:** Berntsen Top Security Rod Monument with a 2-1/2" dia. domed survey cap and permanent magnet encased in a white PVC pipe with a NGS style aluminum access cover.



*This document was prepared by DCI and GBC for use by Louisa County, Iowa.*