

Louisa County, Iowa
 Iowa South Zone (1402)
 Horiz. Datum: NAD83(NSRS2007)
 Vert. Datum: NAVD 1988
 US Survey Feet
2007

Point Name: **26**

Designation: 2006-026 Louisa Co GPS Control Pt.

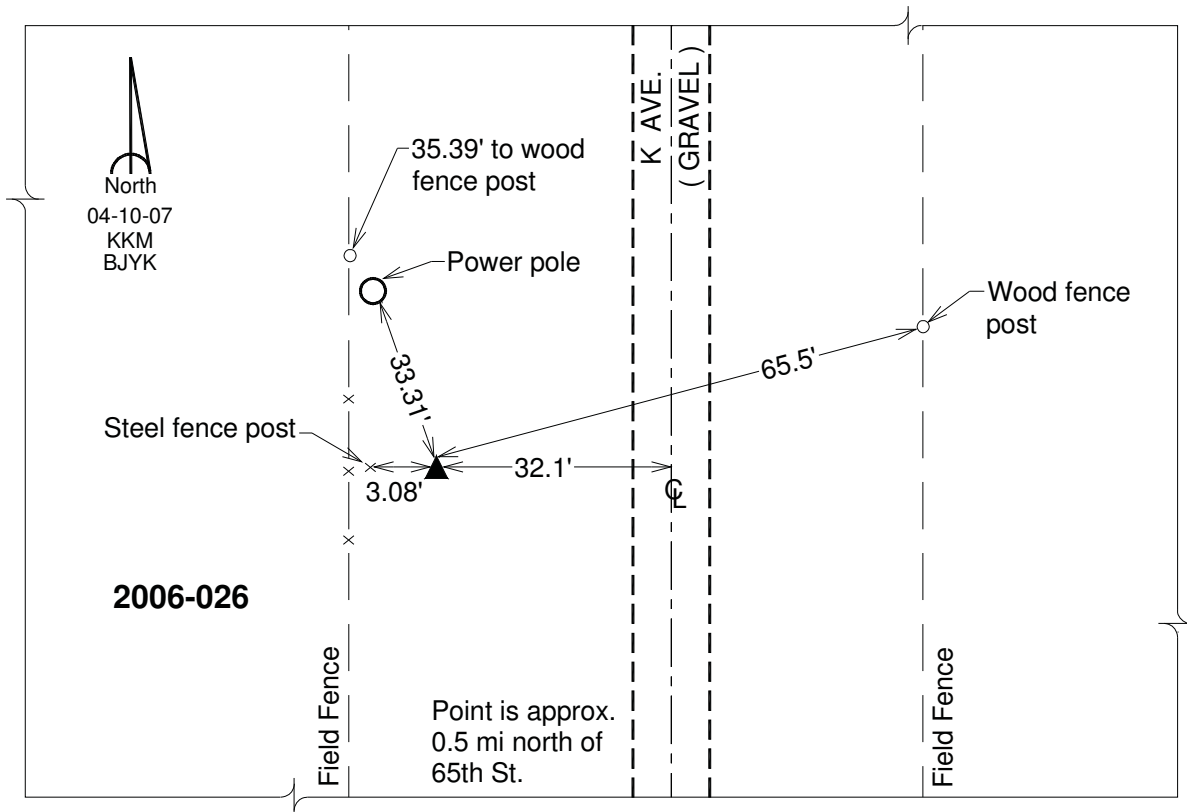
Northing: **431473.96**sft Easting: **2274420.24**sft

Orthometric Height: **580.31**sft Ellipsoid Height: **472.08**sft **Geoid03**

Latitude: **41°09'40.51155"N** Longitude: **91°11'49.76381"W**

Mapping Angle: **1°31'01"** Combination Scale Factor: **0.99992608**

Monument Type: Berntsen Top Security Rod Monument with a 2-1/2" dia. domed survey cap and permanent magnet encased in a white PVC pipe with a NGS style aluminum access cover.



This document was prepared by DCI and GBC for use by Louisa County, Iowa.