

**Louisa County, Iowa**  
Iowa South Zone (1402)  
Horiz. Datum: NAD83(NSRS2007)  
Vert. Datum: NAVD 1988  
US Survey Feet  
**2007**

Point Name: **27**

**Designation:** 2006-027 Louisa Co GPS Control Pt.

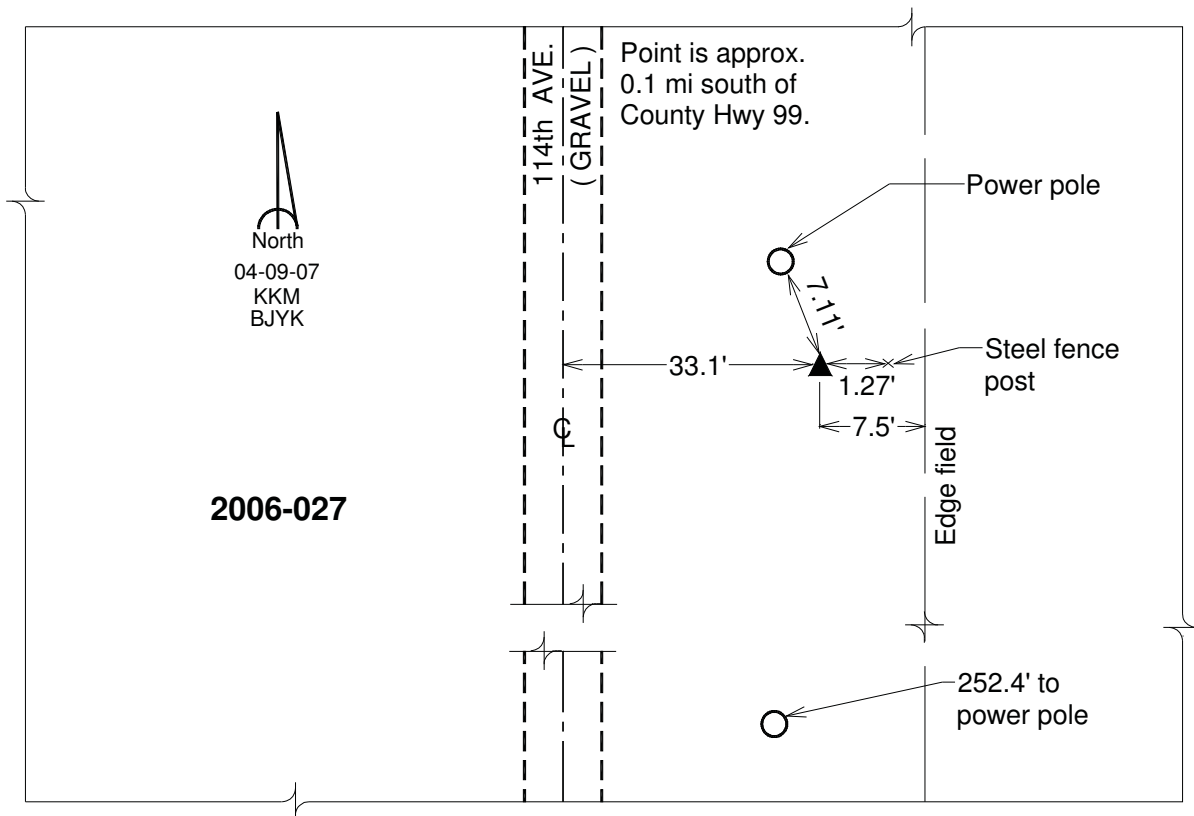
Northing: **434602.84**sft Easting: **2288079.35**sft

Orthometric Height: **559.00**sft Ellipsoid Height: **450.81**sft **Geoid03**

Latitude: **41°10'07.80511"N** Longitude: **91°08'50.13696"W**

Mapping Angle: **1°32'59"** Combination Scale Factor: **0.99992701**

**Monument Type:** Berntsen Top Security Rod Monument with a 2-1/2" dia. domed survey cap and permanent magnet encased in a white PVC pipe with a NGS style aluminum access cover.



*This document was prepared by DCI and GBC for use by Louisa County, Iowa.*