

Louisa County, Iowa
 Iowa South Zone (1402)
 Horiz. Datum: NAD83(NSRS2007)
 Vert. Datum: NAVD 1988
 US Survey Feet
2007

Point Name: **28**

Designation: 2006-028 Louisa Co GPS Control Pt.

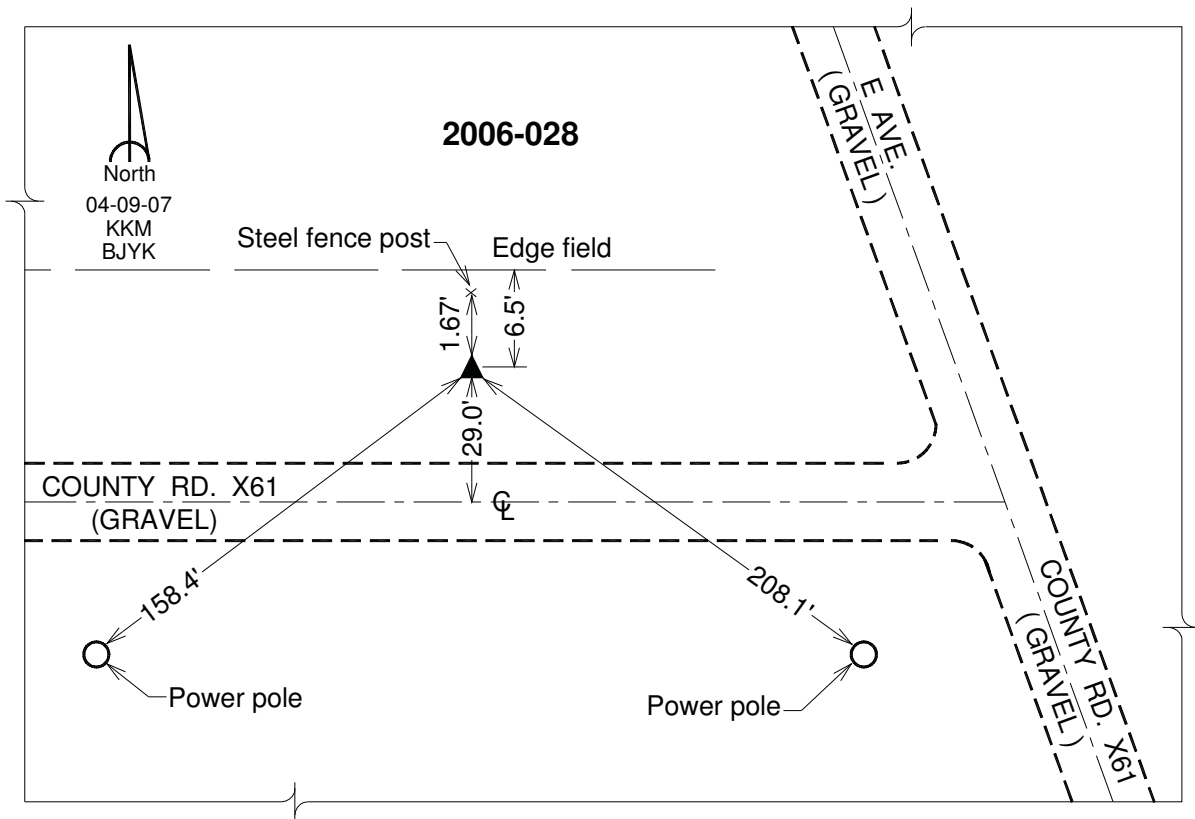
Northing: **434515.29sft** Easting: **2303693.94sft**

Orthometric Height: **638.30sft** Ellipsoid Height: **530.15sft** **Geoid03**

Latitude: **41°10'02.71742"N** Longitude: **91°05'26.07068"W**

Mapping Angle: **1°35'14"** Combination Scale Factor: **0.99992324**

Monument Type: Berntsen Top Security Rod Monument with a 2-1/2" dia. domed survey cap and permanent magnet encased in a white PVC pipe with a NGS style aluminum access cover.



This document was prepared by DCI and GBC for use by Louisa County, Iowa.