

**Louisa County, Iowa**  
Iowa South Zone (1402)  
Horiz. Datum: NAD83(NSRS2007)  
Vert. Datum: NAVD 1988  
US Survey Feet  
**2007**

Point Name: **29**

**Designation:** 2006-029 Louisa Co GPS Control Pt.

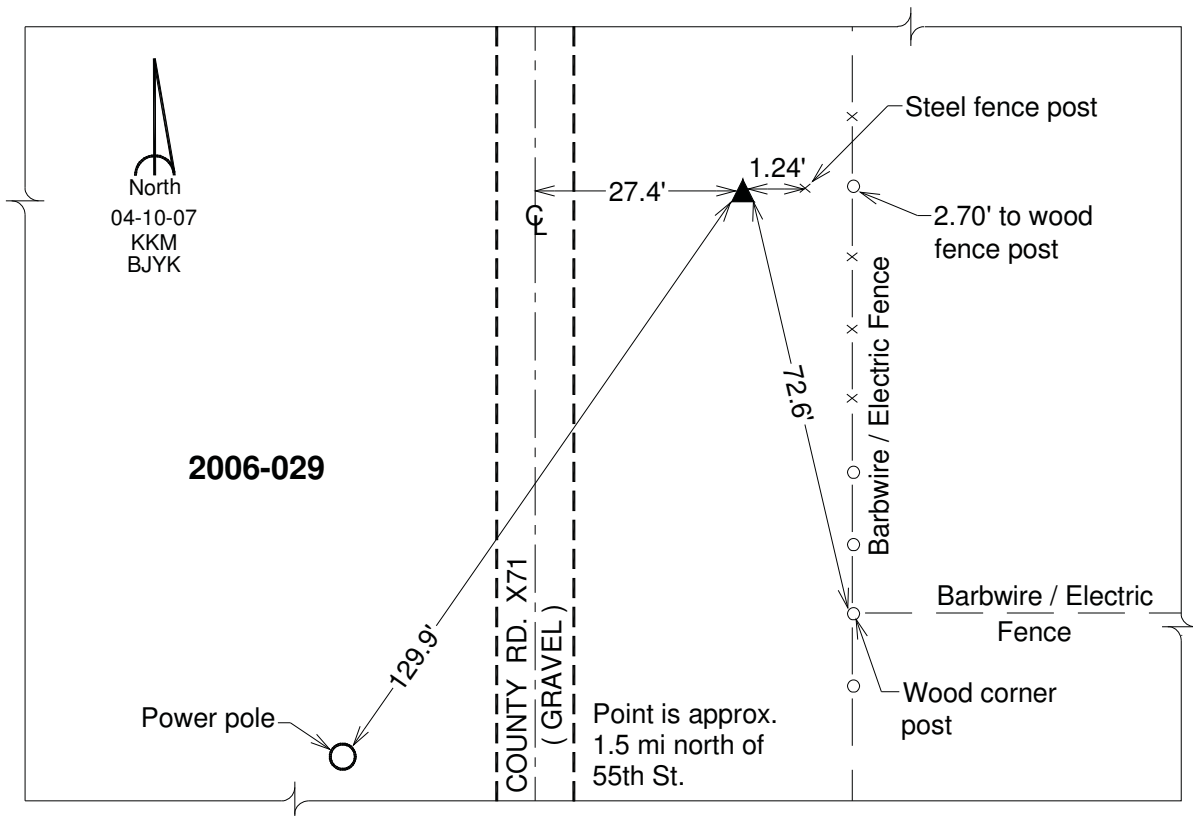
Northing: **431713.55sft**    Easting: **2324770.20sft**

Orthometric Height: **534.00sft**    Ellipsoid Height: **425.88sft**    **Geoid03**

Latitude: **41°09'29.18580"N**                      Longitude: **91°00'51.64296"W**

Mapping Angle: **1°38'14"**                      Combination Scale Factor: **0.99992833**

**Monument Type:** Berntsen Top Security Rod Monument with a 2-1/2" dia. domed survey cap and permanent magnet encased in a white PVC pipe with a NGS style aluminum access cover.



*This document was prepared by DCI and GBC for use by Louisa County, Iowa.*