

Louisa County, Iowa
Iowa South Zone (1402)
Horiz. Datum: NAD83(NSRS2007)
Vert. Datum: NAVD 1988
US Survey Feet
2007

Point Name: **31**

Designation: 2006-031 Louisa Co GPS Control Pt.

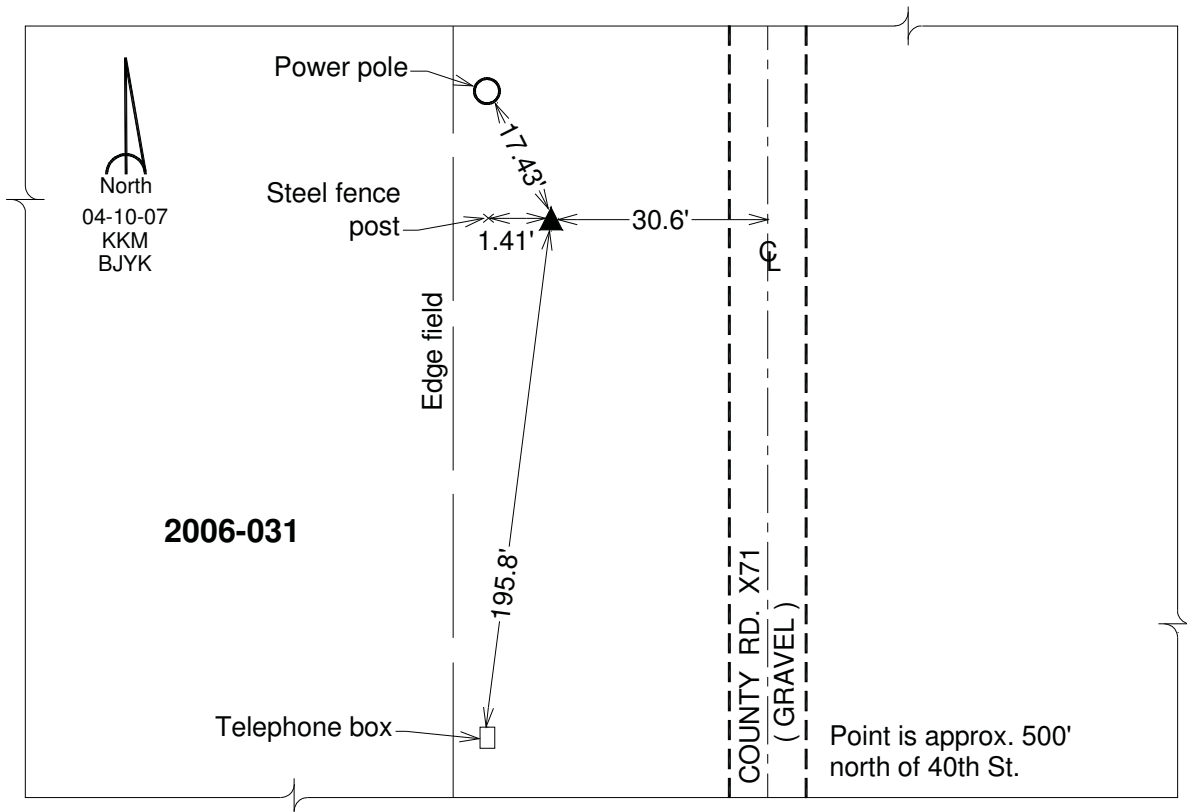
Northing: **416903.36**sft Easting: **2322298.29**sft

Orthometric Height: **535.70**sft Ellipsoid Height: **427.53**sft **Geoid03**

Latitude: **41°07'03.60372"N** Longitude: **91°01'29.45630"W**

Mapping Angle: **1°37'49"** Combination Scale Factor: **0.99992902**

Monument Type: Berntsen Top Security Rod Monument with a 2-1/2" dia. domed survey cap and permanent magnet encased in a white PVC pipe with a NGS style aluminum access cover.



This document was prepared by DCI and GBC for use by Louisa County, Iowa.