

Louisa County, Iowa
Iowa South Zone (1402)
Horiz. Datum: NAD83(NSRS2007)
Vert. Datum: NAVD 1988
US Survey Feet
2007

Point Name: **32**

Designation: 2006-032 Louisa Co GPS Control Pt.

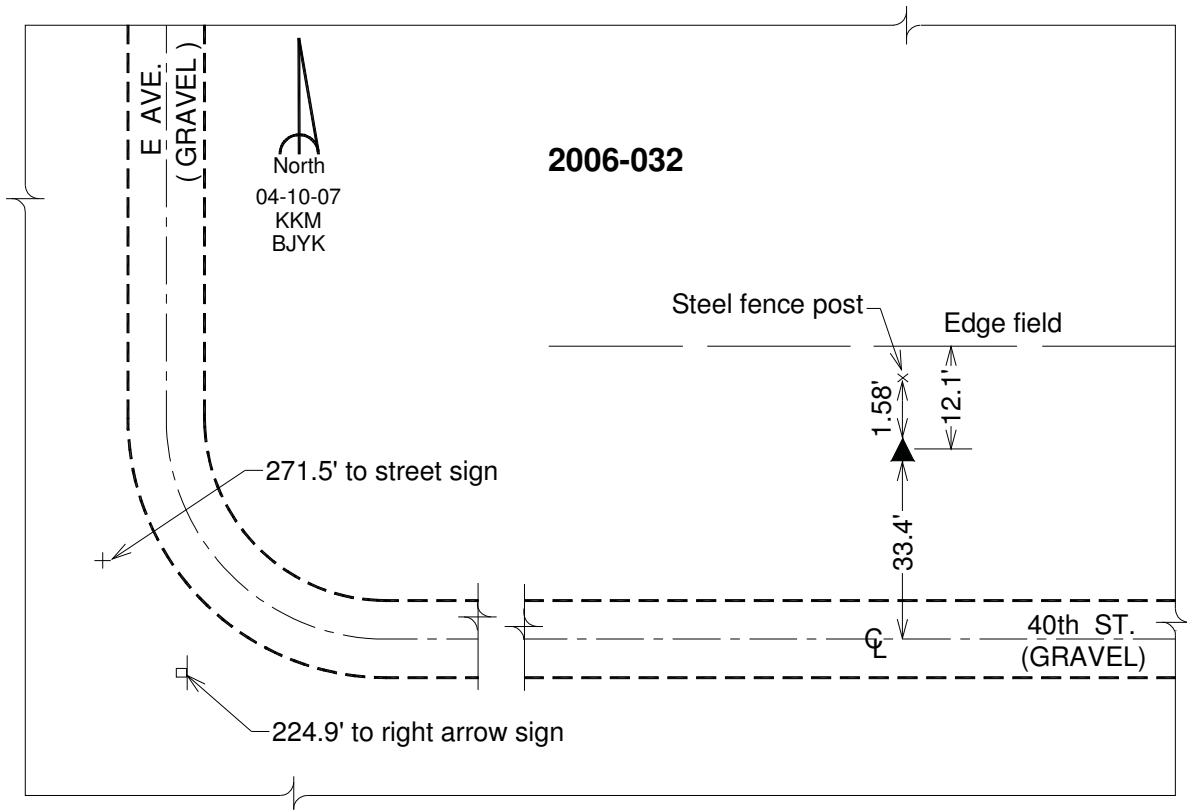
Northing: **416317.32sft** Easting: **2308655.73sft**

Orthometric Height: **578.23sft** Ellipsoid Height: **470.03sft** **Geoid03**

Latitude: **41°07'01.61238"N** Longitude: **91°04'27.85164"W**

Mapping Angle: **1°35'52"** Combination Scale Factor: **0.99992701**

Monument Type: Berntsen Top Security Rod Monument with a 2-1/2" dia. domed survey cap and permanent magnet encased in a white PVC pipe with a NGS style aluminum access cover.



This document was prepared by DCI and GBC for use by Louisa County, Iowa.