

Louisa County, Iowa
 Iowa South Zone (1402)
 Horiz. Datum: NAD83(NSRS2007)
 Vert. Datum: NAVD 1988
 US Survey Feet
2007

Point Name: **33**

Designation: 2006-033 Louisa Co GPS Control Pt.

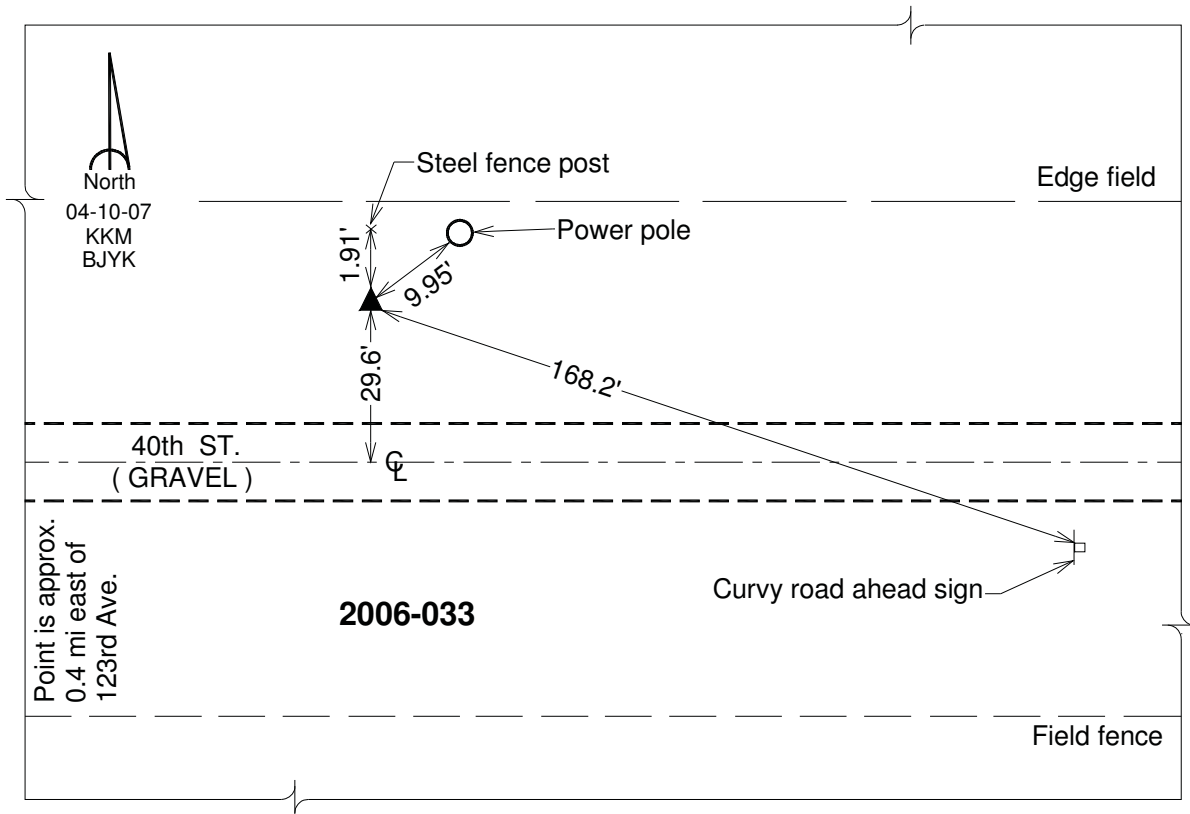
Northing: **415626.15sft** Easting: **2290116.63sft**

Orthometric Height: **561.22sft** Ellipsoid Height: **452.96sft** **Geoid03**

Latitude: **41°06'59.82227"N** Longitude: **91°08'30.23397"W**

Mapping Angle: **1°33'12"** Combination Scale Factor: **0.99992783**

Monument Type: Berntsen Top Security Rod Monument with a 2-1/2" dia. domed survey cap and permanent magnet encased in a white PVC pipe with a NGS style aluminum access cover.



This document was prepared by DCI and GBC for use by Louisa County, Iowa.