

**Louisa County, Iowa**  
Iowa South Zone (1402)  
Horiz. Datum: NAD83(NSRS2007)  
Vert. Datum: NAVD 1988  
US Survey Feet  
**2007**

Point Name: **35**

**Designation:** 2006-035 Louisa Co GPS Control Pt.

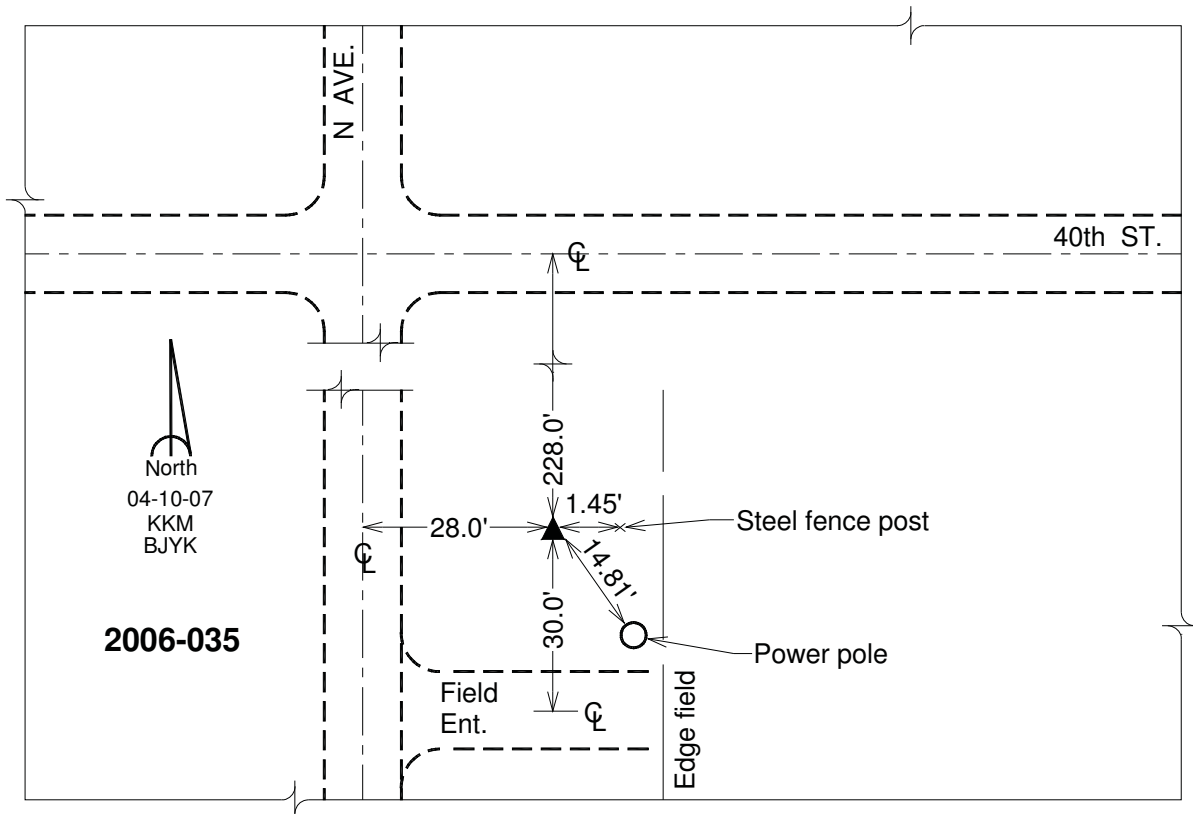
Northing: **414955.64**sft Easting: **2258819.29**sft

Orthometric Height: **717.76**sft Ellipsoid Height: **609.49**sft **Geoid03**

Latitude: **41°07'01.38068"N** Longitude: **91°15'19.24282"W**

Mapping Angle: **1°28'43"** Combination Scale Factor: **0.99992035**

**Monument Type:** Berntsen Top Security Rod Monument with a 2-1/2" dia. domed survey cap and permanent magnet encased in a white PVC pipe with a NGS style aluminum access cover.



*This document was prepared by DCI and GBC for use by Louisa County, Iowa.*