

**Louisa County, Iowa**  
 Iowa South Zone (1402)  
 Horiz. Datum: NAD83(NSRS2007)  
 Vert. Datum: NAVD 1988  
 US Survey Feet  
**2007**

Point Name: **37**

**Designation:** 2006-037 Louisa Co GPS Control Pt.

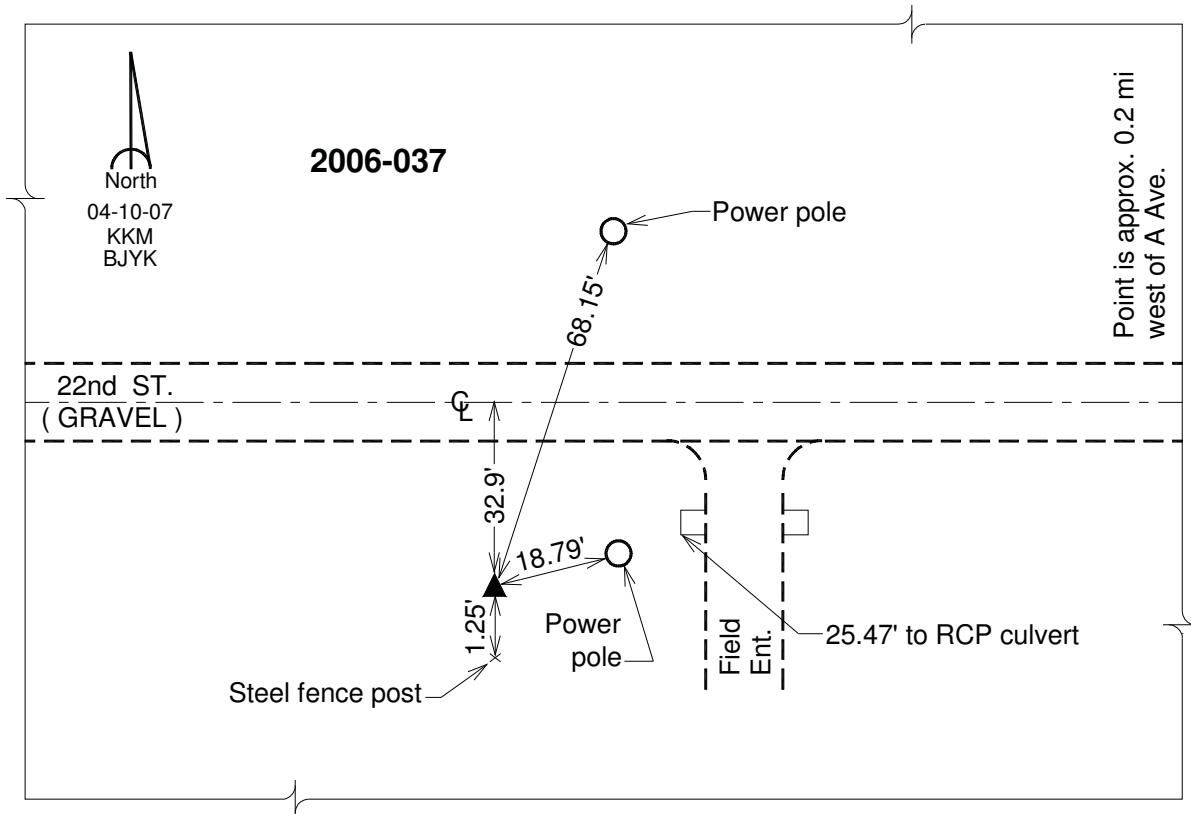
Northing: **407222.63sft**    Easting: **2322443.55sft**

Orthometric Height: **536.02sft**    Ellipsoid Height: **427.81sft**    **Geoid03**

Latitude: **41°05'27.94686"N**                      Longitude: **91°01'31.15711"W**

Mapping Angle: **1°37'48"**                      Combination Scale Factor: **0.99992978**

**Monument Type:** Berntsen Top Security Rod Monument with a 2-1/2" dia. domed survey cap and permanent magnet encased in a white PVC pipe with a NGS style aluminum access cover.



*This document was prepared by DCI and GBC for use by Louisa County, Iowa.*