

**Louisa County, Iowa**  
Iowa South Zone (1402)  
Horiz. Datum: NAD83(NSRS2007)  
Vert. Datum: NAVD 1988  
US Survey Feet  
**2007**

Point Name: **38**

**Designation:** 2006-038 Louisa Co GPS Control Pt.

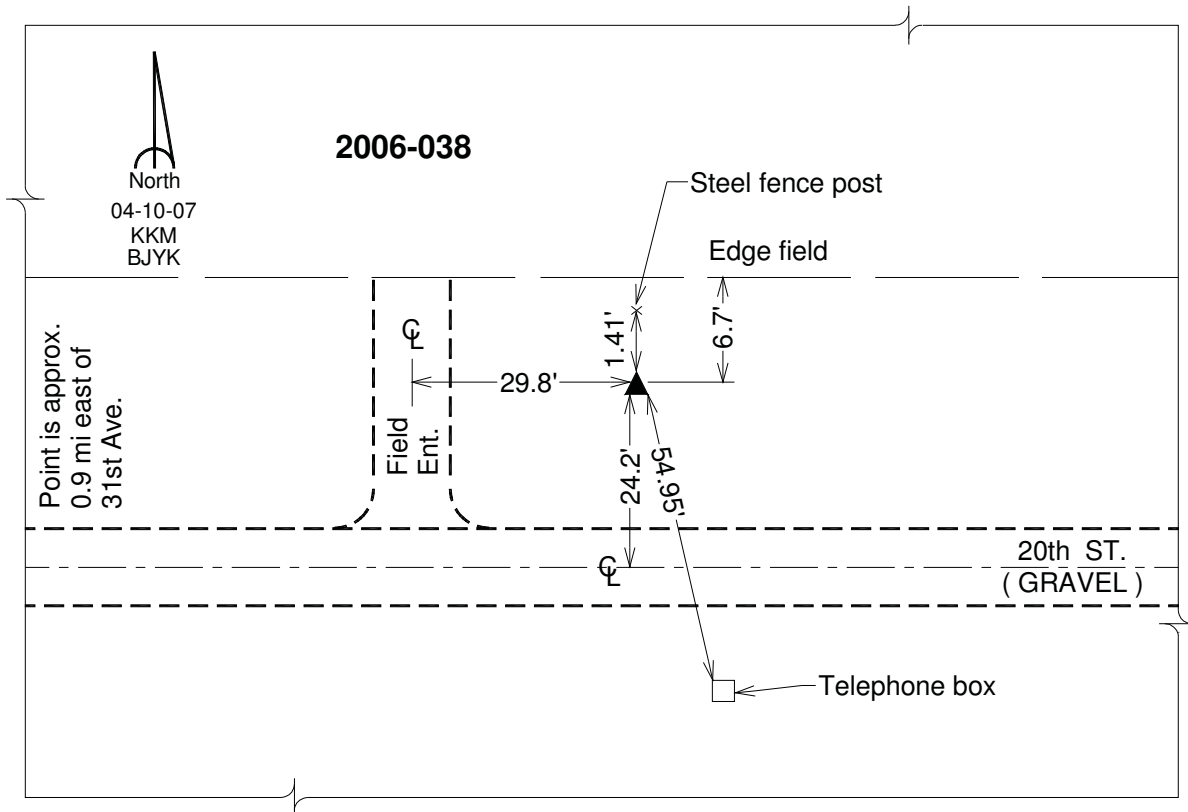
Northing: **406372.77**sft    Easting: **2338098.11**sft

Orthometric Height: **529.39**sft    Ellipsoid Height: **421.21**sft    **Geoid03**

Latitude: **41°05'15.10239"N**                      Longitude: **90°58'07.10962"W**

Mapping Angle: **1°40'03"**                      Combination Scale Factor: **0.99993022**

**Monument Type:** Berntsen Top Security Rod Monument with a 2-1/2" dia. domed survey cap and permanent magnet encased in a white PVC pipe with a NGS style aluminum access cover.



*This document was prepared by DCI and GBC for use by Louisa County, Iowa.*