

**Louisa County, Iowa**  
 Iowa South Zone (1402)  
 Horiz. Datum: NAD83(NSRS2007)  
 Vert. Datum: NAVD 1988  
 US Survey Feet  
**2007**

Point Name: **79**

**Designation:** 92-79 Johnson Co GPS Control Pt. (set by ASI in 1992)

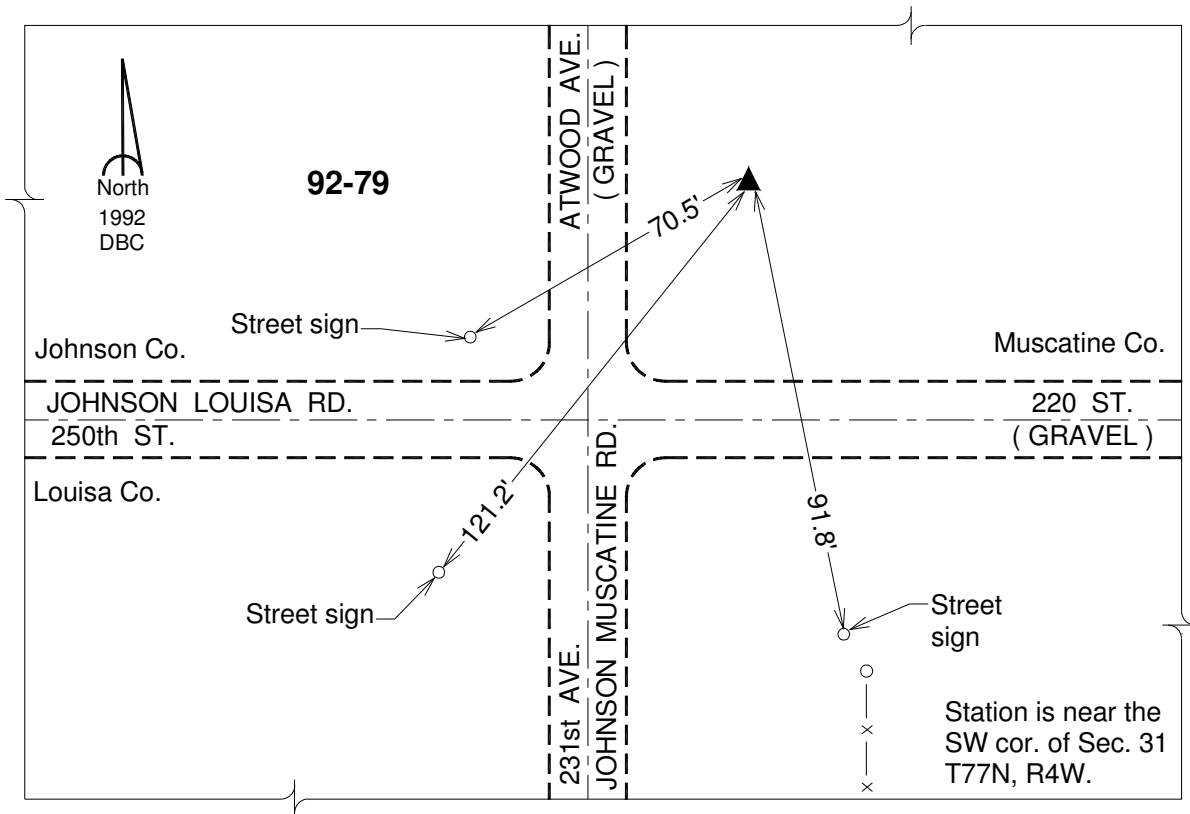
Northing: **525741.19sft**    Easting: **2224938.76sft**

Orthometric Height: **615.48sft**    Ellipsoid Height: **507.89sft**    **Geoid03**

Latitude: **41°25'24.08841"N**    Longitude: **91°22'06.31447"W**

Mapping Angle: **1°24'15"**    Combination Scale Factor: **0.99993165**

**Monument Type:** Berntsen Top Security Rod Monument with a 2-1/2" dia. domed survey cap and permanent magnet encased in a 6" dia. PVC pipe with a NGS style aluminum access cover.



*This document was prepared by DCI and GBC for use by Louisa County, Iowa.*