

Louisa County, Iowa
 Iowa South Zone (1402)
 Horiz. Datum: NAD83(NSRS2007)
 Vert. Datum: NAVD 1988
 US Survey Feet
2007

Point Name: **80**

Designation: 92-80 Johnson Co GPS Control Pt. (set by ASI in 1992)

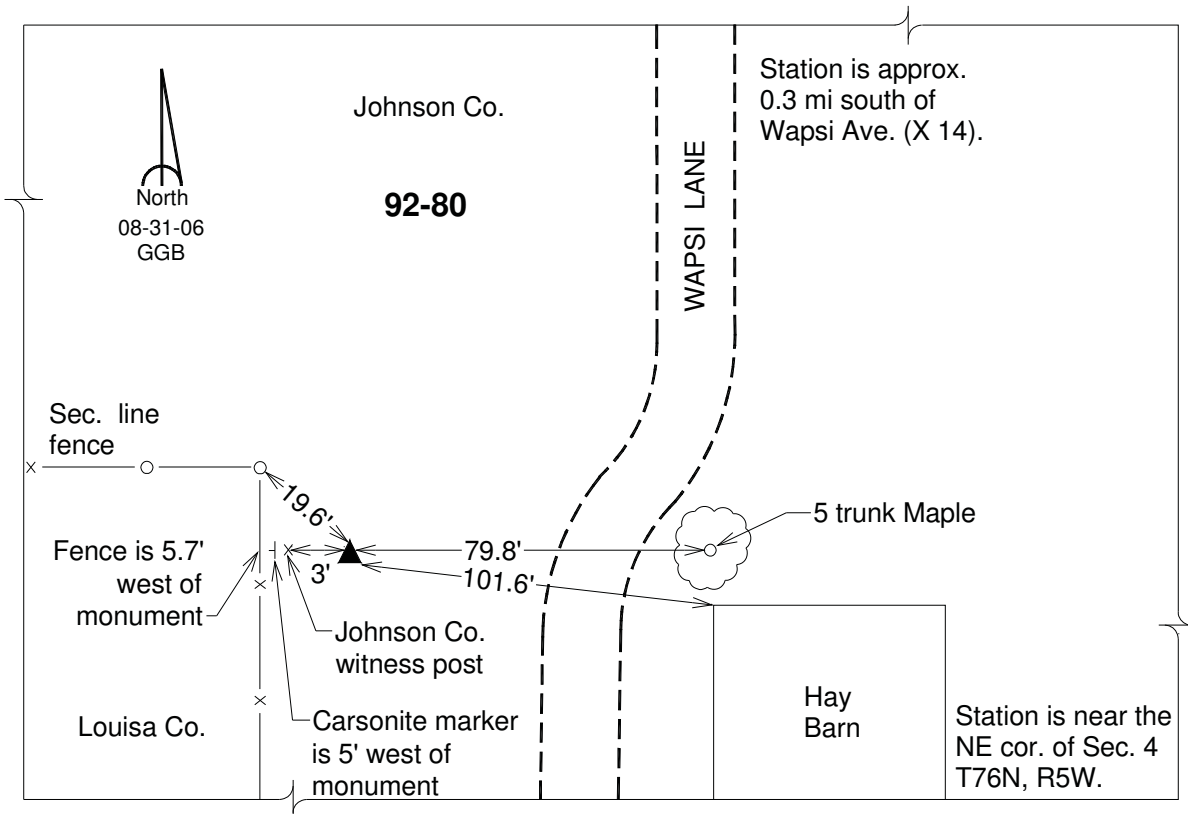
Northing: **525375.18sft** Easting: **2208918.55sft**

Orthometric Height: **647.89sft** Ellipsoid Height: **540.36sft** **Geoid03**

Latitude: **41°25'24.29853"N** Longitude: **91°25'36.66371"W**

Mapping Angle: **1°21'56"** Combination Scale Factor: **0.99993011**

Monument Type: Berntsen Top Security Rod Monument with a 2-1/2" dia. domed survey cap and permanent magnet encased in a 6" dia. PVC pipe with a NGS style aluminum access cover.



This document was prepared by DCI and GBC for use by Louisa County, Iowa.