

Louisa County, Iowa
 Iowa South Zone (1402)
 Horiz. Datum: NAD83(NSRS2007)
 Vert. Datum: NAVD 1988
 US Survey Feet
2007

Point Name: **81**

Designation: 92-81 Johnson Co GPS Control Pt. (set by ASI in 1992)

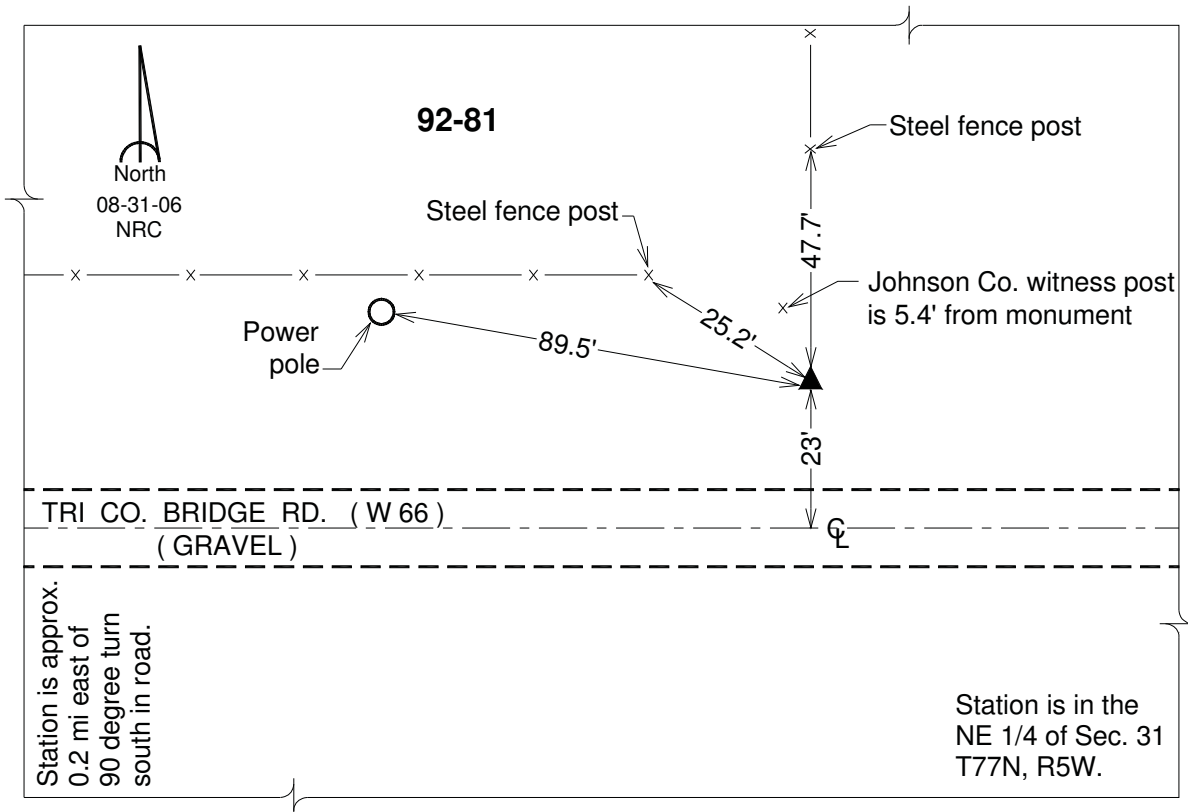
Northing: **527886.43sft** Easting: **2197153.02sft**

Orthometric Height: **617.15sft** Ellipsoid Height: **509.66sft** **Geoid03**

Latitude: **41°25'51.84541"N** Longitude: **91°28'10.29626"W**

Mapping Angle: **1°20'15"** Combination Scale Factor: **0.99993210**

Monument Type: Berntsen Top Security Rod Monument with a 2-1/2" dia. domed survey cap and permanent magnet encased in a 6" dia. PVC pipe with a NGS style aluminum access cover.



This document was prepared by DCI and GBC for use by Louisa County, Iowa.