

Louisa County, Iowa
Iowa South Zone (1402)
Horiz. Datum: NAD83(NSRS2007)
Vert. Datum: NAVD 1988
US Survey Feet
2007

Point Name: **127**

Designation: 96-127 Washington Co GPS Control Pt. (set by ASI in 1996)

Northing: **503813.53**sft Easting: **2193621.11**sft

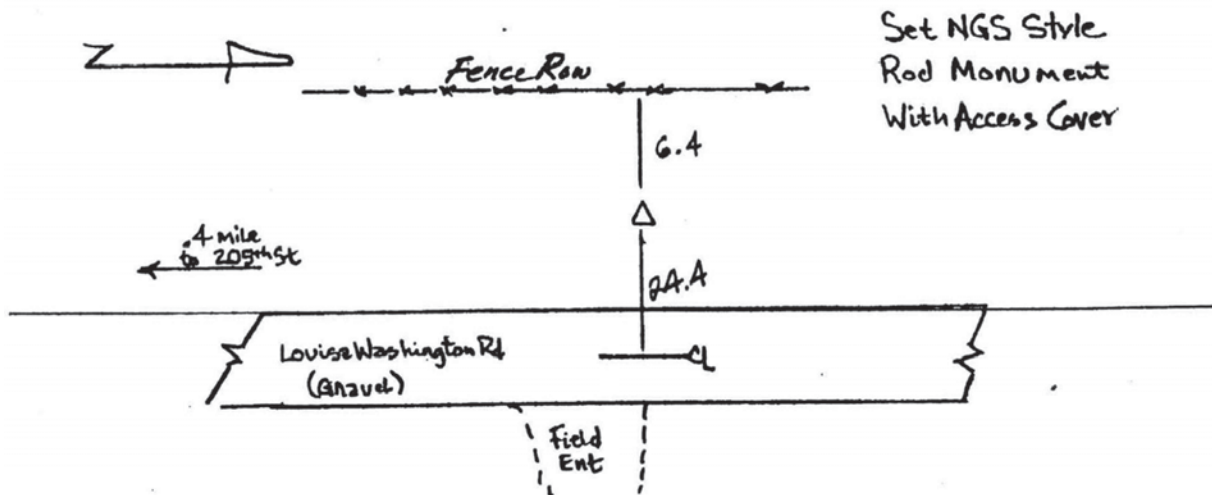
Orthometric Height: **697.74**sft Ellipsoid Height: **590.19**sft **Geoid03**

Latitude: **41°21'54.87157"N** Longitude: **91°29'03.97465"W**

Mapping Angle: **1°19'40"** Combination Scale Factor: **0.99992431**

Monument Type: Berntsen Top Security Rod Monument with a 2-1/2" dia. domed survey cap and permanent magnet encased in a 5" dia. PVC pipe with a NGS style aluminum access cover.

To Reach: 25 ft. West of Louisa-Washington Rd., 10 ft. North of field entrance to East. Near the S.E. corner of Sec 24, T76N, R6W.



127
RKE KRR